



2015

CFO Statistics on Philippine INTERNATIONAL MIGRATION



A PUBLICATION OF THE COMMISSION ON FILIPINOS OVERSEAS

COPYRIGHT © COMMISSION ON FILIPINOS OVERSEAS
PUBLISHED IN JUNE 2017
ISSN 2345-8100



**OFFICE OF THE PRESIDENT OF THE PHILIPPINES
COMMISSION ON FILIPINOS OVERSEAS**

MESSAGE

The increasing number of Filipinos leaving the country every year, in search of better life and opportunities overseas and their immense contributions to national and local development, reflects the growing importance of international migration and development (M&D). Evidenced-based data on migration is important for policy-makers, researchers, and government program implementers to do their duty of ensuring a well-managed migration of Filipinos. The latter brings significant benefits to countries of origin and destination, as well as to migrants and their families.

It is with that duty in mind, and in line with our country's commitment to the 2030 Agenda for Sustainable Development, particularly in providing the public up-to-date migration statistics, that we publish the 2015 CFO Statistics on Philippine International Migration.

We at the Commission hope that this knowledge material made publicly accessible, will be of value either as a tool for informed decision-making or a guide to raise awareness on the realities of Philippine migration.

MARIA REGINA ANGELA GALIAS
Officer-in-Charge Chairperson

TABLE OF CONTENTS

Message	1
Introduction	4
Filipino Emigrants (2005-2015)	5
<i>Infographics</i>	6
<i>Technical Tables</i>	14
Marriage Migrants (2005-2015)	35
<i>Infographics</i>	36
<i>Technical Table</i>	42
Immigrant Workers (2005-2015)	47
<i>Infographics</i>	48
<i>Technical Tables</i>	50
Au Pairs (2012-2015)	53
<i>Infographics</i>	54
<i>Technical Tables</i>	59
Exchange Visitor Program Participants (2014-2015)	63
<i>Infographics</i>	64
<i>Technical Tables</i>	66
Diaspora Philanthropy Thru LINKAPIL Program (2005-2015)	69
<i>Infographics</i>	70
<i>Technical Tables</i>	76
Philippine Schools Overseas (SY2014-2015; SY2015-2016)	81
Assistance to Nationals Cases (2015)	85

INTRODUCTION

The 2015 CFO Statistics on Philippine International Migration contains data on international migration collected and processed by the Commission on Filipinos Overseas. The CFO is a Philippine government agency under the Office of the President, tasked to promote migrant welfare and interest and strengthen ties with Filipino communities overseas.

The CFO data is classified into migration flow, migration and development, and assistance to nationals statistics. Specifically, the data featured in this compendium include statistical profile of registered Filipino emigrants, spouses and partners of foreign nationals, Exchange Visitor Program participants, au pairs, diaspora philanthropy thru the CFO's LINKAPIL Program, Philippine Schools Overseas, and Anti-Human Trafficking Initiative of the CFO.

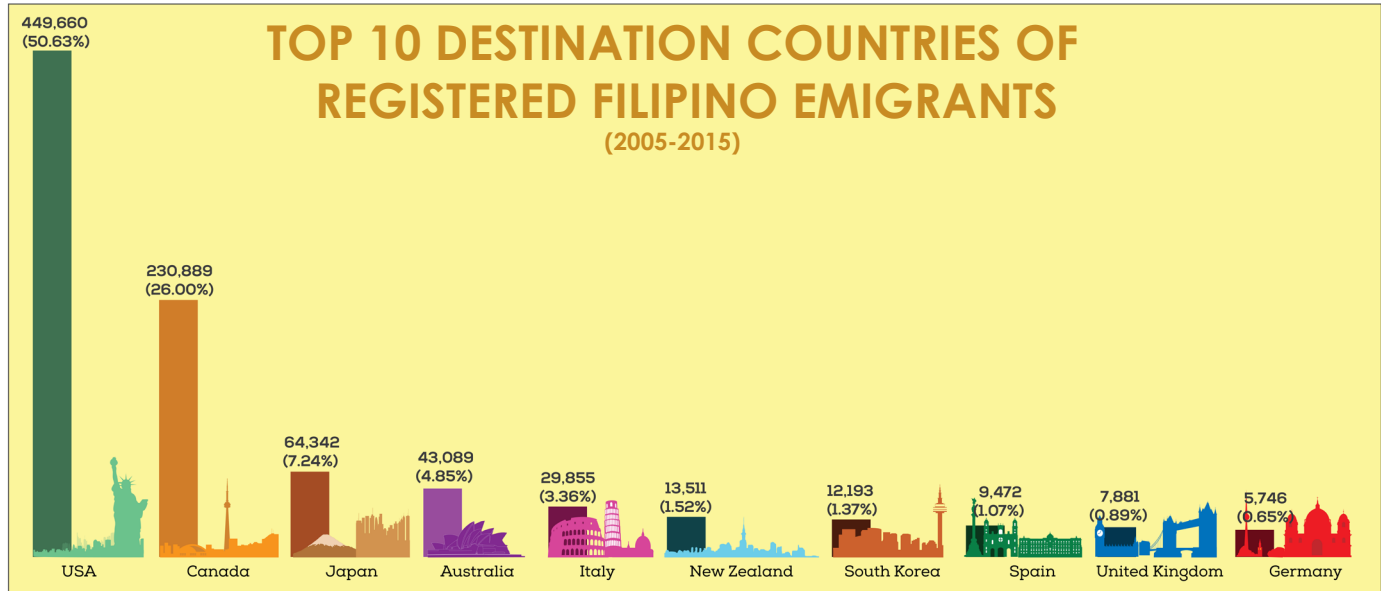
The data covers a ten-year period to provide the public with information on Philippine migration trends.

CFO has been releasing data since 1980. To access other statistics produced by the CFO please visit www.cfo.gov.ph.

FILIPINO EMIGRANTS (2005-2015)

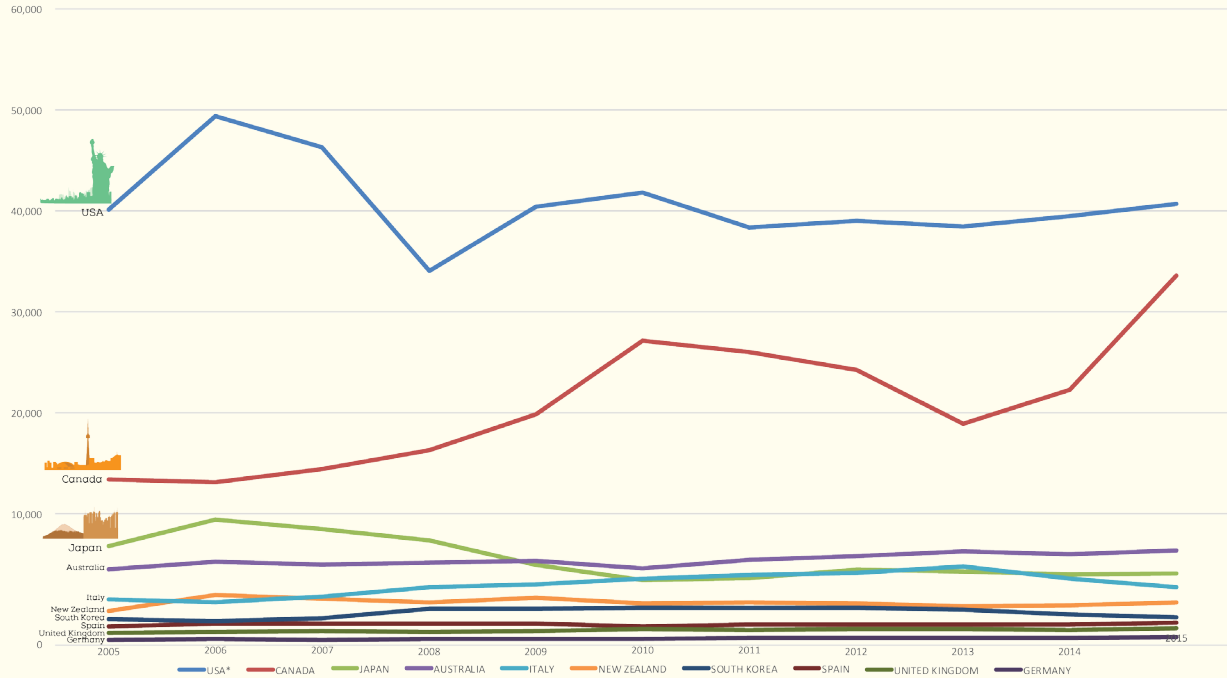
Filipino emigrants are those leaving the Philippines for family reunification, marriage migration or skills-based migration, with an intention to stay for long-term or permanently overseas.

They are immigrants or permanent visa holders.

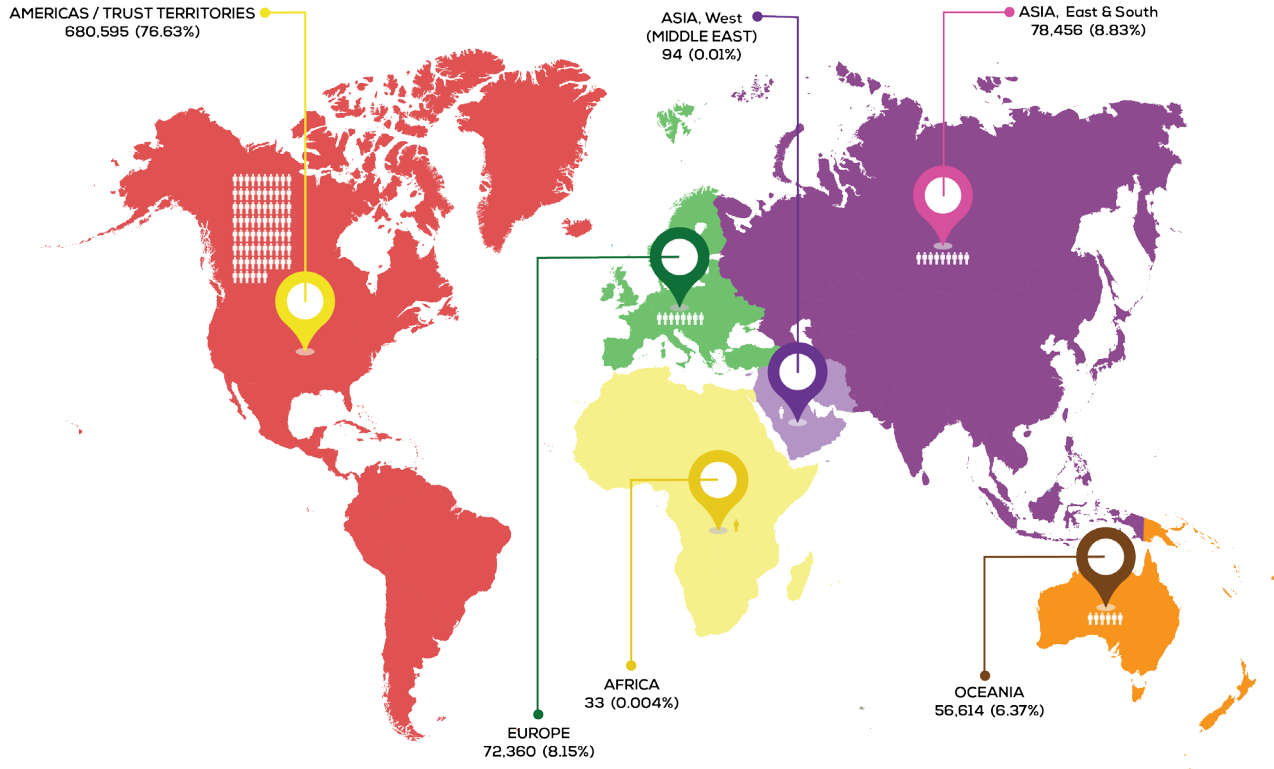


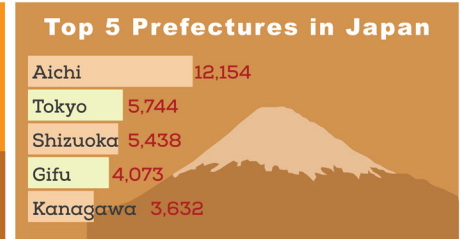
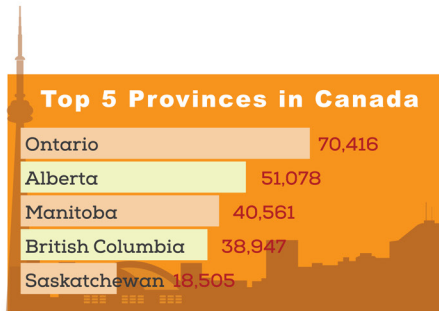
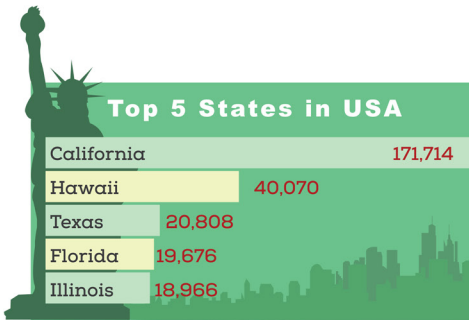
US, Canada and Japan are the 3 major country destinations of Filipino emigrants. Other main destinations are Australia, Italy, New Zealand, South Korea, Spain, United Kingdom and Germany.

MIGRATION TREND FOR TOP 10 DESTINATION COUNTRIES OF REGISTERED FILIPINO EMIGRANTS (2005-2015)



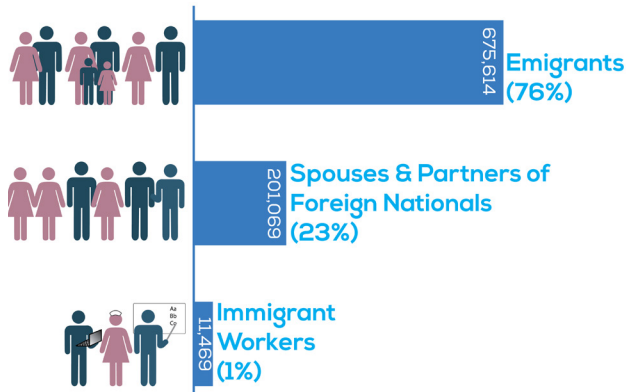
NUMBER OF REGISTERED FILIPINO EMIGRANTS PER CONTINENT (2005-2015)





The main destination of Filipino emigrants in the US is California; in Canada is Ontario; and in Japan is Aichi.

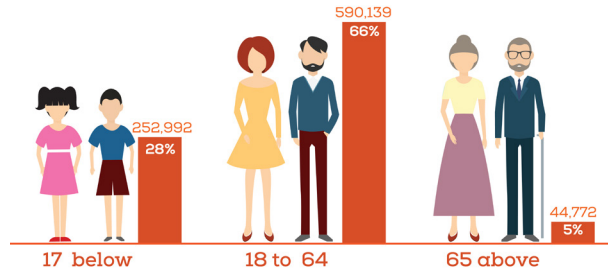
NUMBER OF REGISTERED FILIPINO EMIGRANTS BY CATEGORY (2005-2015)



Majority of Filipino emigrants are permanently migrating for family reunification. Other reasons are for marriage to foreign nationals or to find work overseas.

NUMBER OF REGISTERED FILIPINO EMIGRANTS BY AGE

(2005-2015)



The average age of a Filipino emigrant is 31 years old.
28% of emigrants are 17 below.

SEX RATIO OF REGISTERED FILIPINO EMIGRANTS

(2005-2015)

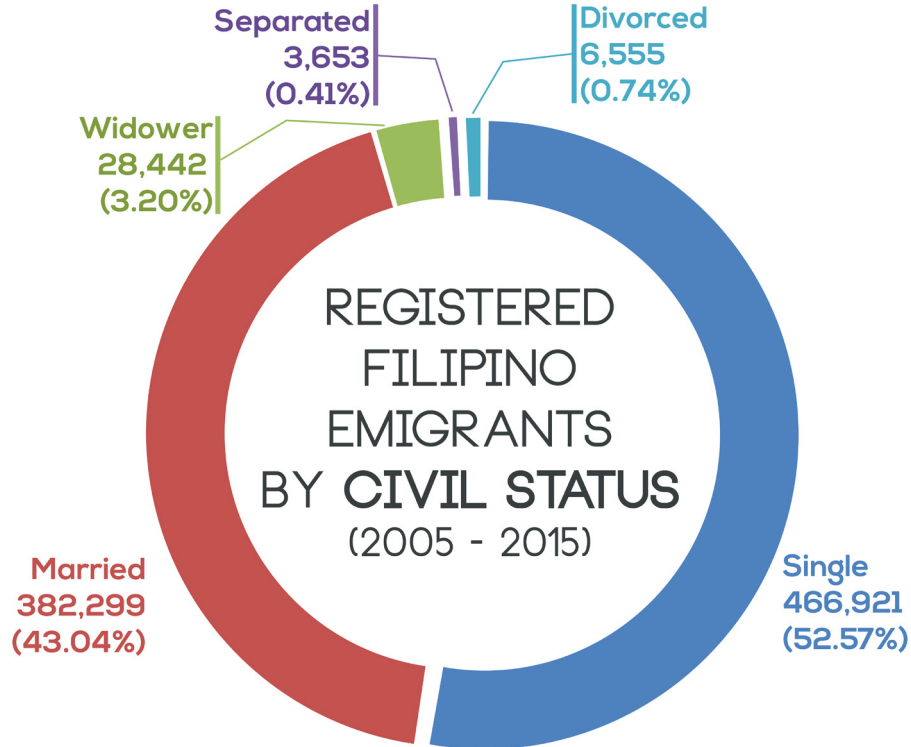
Majority of Filipino emigrants are female (60%).

68
male



100
female

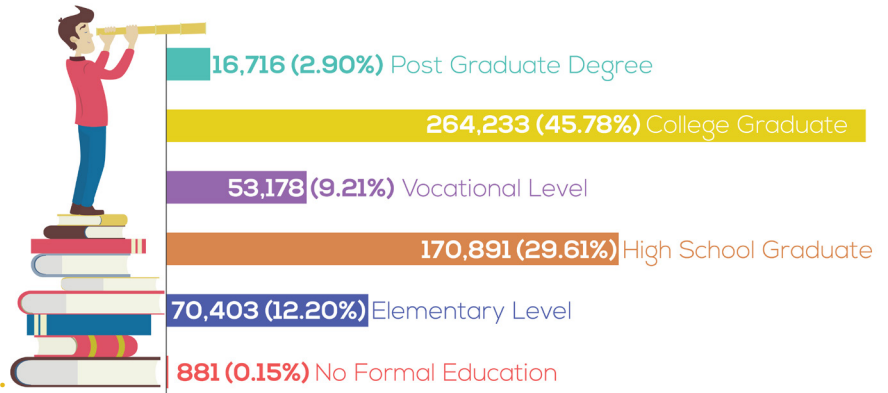




53% of the Filipino emigrants are single, while 43% are married prior to departure.

NUMBER OF REGISTERED FILIPINO EMIGRANTS AGES 21 AND ABOVE BY EDUCATIONAL ATTAINMENT (2005-2015)

Filipino emigrants are highly educated. 49% are college graduates.



OCCUPATION OF REGISTERED FILIPINO EMIGRANTS PRIOR TO MIGRATION (2005-2015)

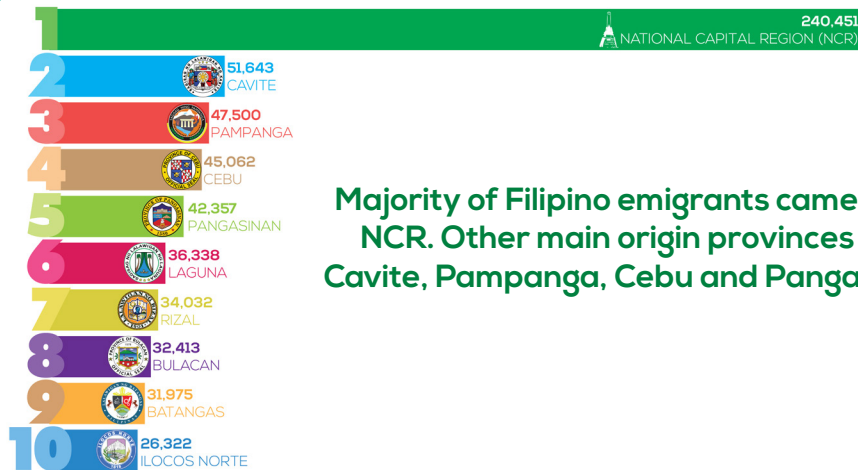
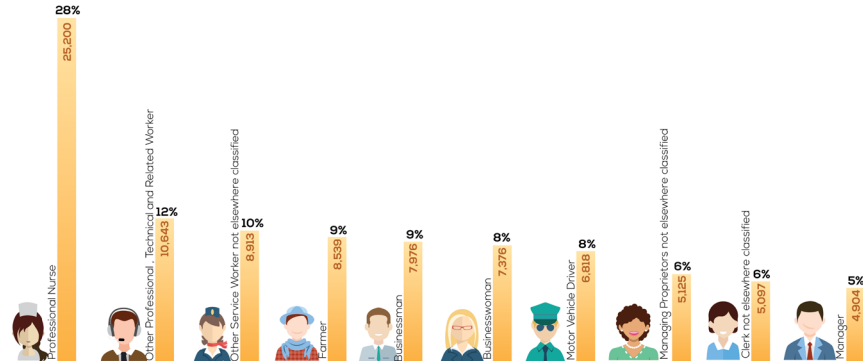


39% of Filipino emigrants were professionals or technical workers prior to migration.

Note: Occupation is based from Philippine Statistics Authority (PSA) Work Classifications.

TOP 10 PROFESSIONS PRIOR TO MIGRATION (2005-2015)

Prior to migration, the leading profession among Filipino emigrants is professional nurse.



Majority of Filipino emigrants came from NCR. Other main origin provinces are Cavite, Pampanga, Cebu and Pangasinan.

**TOP 10
PROVINCE OF
ORIGIN OF
REGISTERED
FILIPINO
EMIGRANTS
(2005-2015)**

NUMBER OF REGISTERED FILIPINO EMIGRANTS BY MAJOR COUNTRY OF DESTINATION: 2005- 2015

YEAR	USA*	CANA- DA	JAPAN	AUS	ITALY	NZL	SOUTH KOREA	SPAIN	UK	GER- MANY	OTHERS	TOTAL	% Incre- ment (Dec.)
2005	40,280	13,598	7,062	3,027	1,250	394	480	685	478	367	1,407	69,028	
2006	49,522	13,230	9,742	3,735	954	1,973	281	898	556	457	1,619	82,967	20.19%
2007	46,420	14,572	8,806	3,467	1,490	1,639	576	933	654	424	1,618	80,599	-2.85%
2008	34,201	16,443	7,682	3,657	2,405	1,252	1,482	907	552	489	1,730	70,800	-12.16%
2009	40,598	19,967	5,278	3,850	2,734	1,725	1,458	970	646	518	1,974	79,718	12.60%
2010	42,007	27,302	3,766	3,062	3,319	1,114	1,565	693	817	510	1,920	86,075	7.97%
2011	38,463	26,203	3,965	3,957	3,632	1,185	1,618	871	749	590	2,177	83,410	-3.10%
2012	39,124	24,354	4,759	4,259	3,818	1,170	1,632	808	881	553	2,282	83,640	0.28%
2013	38,637	19,041	4,554	4,748	4,526	888	1,419	868	829	609	2,109	78,228	-6.47%
2014	39,594	22,479	4,341	4,467	3,275	974	982	834	783	578	2,382	80,689	3.15%
2015	40,814	33,700	4,387	4,860	2,452	1,197	700	1,005	936	651	2,296	92,998	15.25%
TOTAL	449,660	230,889	64,342	43,089	29,855	13,511	12,193	9,472	7,881	5,746	21,514	888,152	
% to TOTAL	50.63%	26.00%	7.24%	4.85%	3.36%	1.52%	1.37%	1.07%	0.89%	0.65%	2.42%	100%	

*Note: USA and Insular Area (American Samoa, Guam, Commonwealth of the Mariana Islands, US Virgin Islands, Republic of Marshall Islands, Federated States of Micronesia, Republic of Palau, and Commonwealth of Puerto Rico)

Source: Commission on Filipinos Overseas (CFO)

NUMBER OF REGISTERED FILIPINO EMIGRANTS BY SEX: 2005 - 2015

YEAR	MALE	FEMALE	TOTAL	SEX RATIO*
2005	27,333	41,695	69,028	65M/100F
2006	32,259	50,708	82,967	64M/100F
2007	30,877	49,722	80,599	62M/100F
2008	27,839	42,961	70,800	65M/100F
2009	31,793	47,925	79,718	66M/100F
2010	36,287	49,788	86,075	73M/100F
2011	34,563	48,847	83,410	71M/100F
2012	34,076	49,564	83,640	69M/100F
2013	31,288	46,940	78,228	67M/100F
2014	32,368	48,321	80,689	67M/100F
2015	40,079	52,919	92,998	76M/100F
TOTAL	358,762	529,390	888,152	68M/100F
Annual Average	32,615	48,126	80,741	68M/100F

*Sex Ratio is number of Males for every 100 Females

Source: Commission on Filipinos Overseas (CFO)

NUMBER OF REGISTERED FILIPINO EMIGRANTS BY AGE GROUP: 2005 - 2015

AGE GROUP	2005	2006	2007	2008	2009	2010	2011	2012	2013	2014	2015	TOTAL	%
14 - Below	15,057	17,919	17,011	15,420	17,706	20,864	19,891	18,887	17,170	18,014	21,581	199,520	22.46%
15 - 19	6,404	7,169	8,036	7,516	8,246	8,683	8,346	8,493	8,309	8,401	11,102	90,705	10.21%
20 - 24	7,122	9,267	8,484	7,443	7,907	8,388	8,365	8,898	8,029	8,396	8,902	91,201	10.27%
25 - 29	8,309	10,524	9,404	8,019	8,423	8,218	8,629	8,847	8,060	8,790	9,178	96,401	10.85%
30 - 34	8,508	10,383	8,233	7,084	8,022	9,179	8,952	8,867	8,546	9,284	10,238	97,296	10.95%
35 - 39	6,093	7,521	6,669	5,826	6,544	7,682	7,352	7,095	6,677	7,323	8,700	77,482	8.72%
40 - 44	4,116	4,734	4,792	4,337	4,938	5,754	5,657	5,274	4,990	5,159	5,901	55,652	6.27%
45 - 49	3,126	3,390	3,443	3,266	3,666	4,337	4,015	3,749	3,342	3,534	4,248	40,116	4.52%
50 - 54	2,455	2,701	2,844	2,718	3,128	3,433	3,136	2,961	2,979	3,081	3,291	32,727	3.68%
55 - 59	2,392	2,618	3,013	2,615	3,273	3,005	2,785	2,976	3,159	2,870	3,182	31,888	3.59%
60 - 64	2,074	2,351	3,163	2,708	3,163	2,803	2,711	3,160	2,804	2,496	2,710	30,143	3.39%
65 - 69	1,732	2,090	2,699	1,918	2,304	1,803	1,843	2,263	2,184	1,786	2,061	22,683	2.55%
70 - Above	1,640	2,300	2,808	1,861	2,340	1,822	1,713	2,170	1,978	1,555	1,902	22,089	2.49%
Not Reported / No Response				69	58	104	15		1		2	249	0.03%
TOTAL	69,028	82,967	80,599	70,800	79,718	86,075	83,410	83,640	78,228	80,689	92,998	888,152	100%
Average Age	31	31	32	31	31	29	29	30	30	30	29	31	

Source: Commission on Filipinos Overseas (CFO)

NUMBER OF REGISTERED FILIPINO EMIGRANTS BY EDUCATIONAL ATTAINMENT PRIOR TO MIGRATION : 2005 - 2015

EDUCATIONAL ATTAINMENT	2005	2006	2007	2008	2009	2010	2011	2012	2013	2014	TOTAL	%
Not of Schooling Age	5,363	6,374	5,445	4,842	5,813	7,061	6,658	6,174	5,661	5,842	59,233	7.45%
No Formal Education	126	147	157	105	92	83	64	61	69	95	999	0.13%
Elementary Level	8,461	10,278	10,372	8,907	9,986	10,969	10,359	10,089	9,129	9,225	97,775	12.30%
Elementary Graduate	2,212	2,496	2,698	2,314	2,395	2,194	2,152	2,424	2,066	1,980	22,931	2.88%
High School Level	7,569	8,905	9,493	8,216	9,218	9,428	9,260	9,303	8,779	8,665	88,836	11.17%
High School Graduate	7,438	9,176	9,361	8,251	8,702	8,299	8,401	8,707	8,444	8,422	85,201	10.72%
Vocational Level	948	1,101	1,157	970	1,273	1,421	1,363	1,414	1,248	1,405	12,300	1.55%
Vocational Graduate	2,737	3,370	3,774	3,368	4,092	4,534	4,531	4,308	4,062	4,468	39,244	4.94%
College Level	10,357	12,489	13,328	11,852	13,668	14,365	13,809	14,169	13,472	13,913	131,422	16.53%
College Graduate	20,561	24,911	21,759	19,264	21,794	24,834	24,193	24,183	22,841	24,266	228,606	28.75%
Post Graduate Level	1,354	1,659	1,215	1,100	1,071	1,188	1,010	1,063	943	931	11,534	1.45%
Post Graduate	1,567	1,747	1,534	1,564	1,476	1,586	1,484	1,644	1,328	1,330	15,260	1.92%
Non-Formal Education	293	303	297	31	46	17	13	4	8		1,012	0.13%
Not Reported / No Response	42	11	9	16	92	96	113	97	178	147	801	0.10%
TOTAL	69,028	82,967	80,599	70,800	79,718	86,075	83,410	83,640	78,228	80,689	795,154	100%

Source: Commission on Filipinos Overseas (CFO)

**NUMBER OF REGISTERED FILIPINO EMIGRANTS
BY MAJOR OCCUPATIONAL GROUP PRIOR TO MIGRATION : 2005 - 2015**

MAJOR OCCUPATION GROUP	2005	2006	2007	2008	2009	2010	2011	2012	2013	2014	2015	TOTAL	%
A. EMPLOYED													
Prof'l, Tech'l, & Related Workers	9,095	12,526	7,816	7,072	6,849	7,932	8,181	7,841	6,499	6,507	7,504	87,822	39%
Sales Workers	3,358	3,564	3,576	3,037	3,227	2,950	2,880	2,786	2,129	2,495	2,807	32,809	15%
Production Process, Transport Equipment Operators, & Laborers	1,821	2,260	2,374	2,188	2,801	2,889	2,936	2,562	2,162	2,290	2,708	26,991	12%
Clerical Workers	1,454	1,945	2,153	1,979	2,451	2,596	2,207	1,947	1,915	1,954	1,925	22,526	10%
Managerial, Executive, and Administrative Workers	1,025	1,449	1,708	1,553	2,001	2,603	2,176	1,954	2,195	1,905	1,789	20,358	9%
Service Workers	1,850	1,192	1,035	1,188	1,600	1,688	1,899	2,161	2,333	2,522	2,639	20,107	9%
Agri, Animal Husbandry, Forestry Workers & Fishermen	888	1,086	1,201	948	1,217	1,311	1,138	958	906	858	1,151	11,662	5%
Members of the Armed Forces	116	310	289	226	247	389	327	175	128	149	285	2,641	1%

cont. Number of Registered Filipino Emigrants by Major Occupational Group Prior to Migration.

MAJOR OCCUPATION GROUP	2005	2006	2007	2008	2009	2010	2011	2012	2013	2014	TOTAL	%	
B. UNEMPLOYED													
Housewives	13,477	17,701	17,677	14,396	15,283	14,036	13,918	13,647	13,086	13,423	13,723	160,367	18.06%
Retirees	2,325	3,152	4,310	3,322	3,821	3,315	3,020	3,854	3,435	3,105	3,576	37,235	4.19%
Students	16,931	20,465	21,151	18,885	20,897	23,145	21,796	21,507	19,792	20,698	26,667	231,934	26.11%
Minors (Below 7 years old)	5,672	6,692	5,820	4,954	5,831	7,162	6,770	6,172	5,659	5,849	6,159	66,740	7.51%
Out of School Youth	550	178	307	299	380	457	573	381	739	435	473	4,772	0.54%
Refugees												-	0.00%
No Occupation Reported	10,466	10,447	11,182	10,753	13,113	15,602	15,589	17,695	17,250	18,499	21,592	162,188	18.26%
TOTAL	69,028	82,967	80,599	70,800	79,718	86,075	83,410	83,640	78,228	80,689	92,998	888,152	100.00%

Source: Commission on Filipinos Overseas (CFO)

**NUMBER OF REGISTERED FILIPINO EMIGRANTS
BY CIVIL STATUS: 2005 - 2015**

YEAR	Single	Married	Widower	Separated	Divorced	Not Reported	TOTAL
2005	34,346	32,056	2,035	239	347	5	69,028
2006	40,505	39,007	2,616	303	536		82,967
2007	40,200	36,128	3,295	318	656	2	80,599
2008	35,250	32,390	2,341	264	538	17	70,800
2009	41,119	34,700	2,874	347	581	97	79,718
2010	47,143	35,564	2,359	380	609	20	86,075
2011	44,825	35,214	2,439	338	579	15	83,410
2012	43,908	35,776	2,866	401	675	14	83,640
2013	41,388	33,164	2,639	368	623	46	78,228
2014	45,280	32,062	2,307	345	657	38	80,689
2015	52,957	36,238	2,671	350	754	28	92,998
TOTAL	466,921	382,299	28,442	3,653	6,555	282	888,152

Source: Commission on Filipinos Overseas (CFO)

NUMBER OF REGISTERED FILIPINO EMIGRANTS BY YEAR AND COUNTRY OF DESTINATION : 2005 - 2015

COUNTRY	2005	2006	2007	2008	2009	2010	2011	2012	2013	2014	2015	TOTAL
ALBANIA										3		3
ANDORRA									1	1		2
ANGOLA									1			1
ARGENTINA									1			1
ARUBA	1				1	1						3
AUSTRALIA	3,027	3,735	3,467	3,657	3,850	3,062	3,957	4,259	4,748	4,467	4,860	43,089
AUSTRIA	181	94	158	163	140	106	118	103	104	88	81	1,336
BAHRAIN		1										1
BANGLADESH						2						2
BELGIUM	141	134	102	153	123	126	131	179	171	186	143	1,589
BERMUDA				1								1
BOSNIA AND HERZEGOVINA								1				1
BRAZIL	2									2	1	5
BRITISH VIRGIN ISLANDS						1						1
BRUNEI DARUSSALAM						1		1				2
BULGARIA		1			2			2	6	3	1	15
CANADA	13,598	13,230	14,572	16,443	19,967	27,302	26,203	24,354	19,041	22,479	33,700	230,889
CAYMAN ISLANDS									1		1	2
CHILE										2	1	3
CHINA (P.R.O.C.)							1	3	4	10	5	23
COSTA RICA							3					3
CROATIA	1	1		3	2	1	1		1			10

cont. Number of Registered Filipino Emigrants by Year and Country of Destination.

COUNTRY	2005	2006	2007	2008	2009	2010	2011	2012	2013	2014	2015	TOTAL
CYPRUS		1			3	1			2		1	8
CZECH REPUBLIC		1	1	1	1		1	2	2		1	10
DENMARK	27	30	36	45	49	41	41	34	45	55	46	449
DOMINICAN REPUBLIC					1							1
EGYPT						2				1		3
FAROE ISLANDS										1		1
FALKLAND ISLANDS (MALVI-NAS)				1						1		2
FINLAND	24	30	40	44	47	64	87	103	66	112	67	684
FRANCE	62	86	118	130	119	135	159	172	161	211	159	1,512
FRENCH POLYNESIA	1				1		1					3
GERMANY	367	457	424	489	518	510	590	553	609	578	651	5,746
GREECE	1	2	1	4		4	1	6	4	3	4	30
GREENLAND						1	4					5
HONGKONG					1	1						2
HUNGARY			2			1	2		2	3	2	12
ICELAND	20	25	33	29	10	19	25	27	34	9	18	249
INDIA		1	4	1	4	4	10	9	22	13	25	93
INDONESIA			1									1
IRELAND	111	154	110	121	61	76	68	115	139	130	161	1,246
ISLE OF MAN									3		1	4
ISRAEL	8		1		1							10
ITALY	1,250	954	1,490	2,405	2,734	3,319	3,632	3,818	4,526	3,275	2,452	29,855
JAPAN	7,062	9,742	8,806	7,682	5,278	3,766	3,965	4,759	4,554	4,341	4,387	64,342

cont. Number of Registered Filipino Emigrants by Year and Country of Destination.

COUNTRY	2005	2006	2007	2008	2009	2010	2011	2012	2013	2014	2015	TOTAL
KAZAKHSTAN								1				1
KUWAIT		1	2	1	2							6
LATVIA									1			1
LEBANON		1		1		1						3
LEICHTENSTEIN					1	1		1			1	4
LESOTHO											3	3
LIBYA				2								2
LITHUANIA										1		1
LUXEMBOURG	6	3	3		3	1	1		2	3	1	23
MACEDONIA									2			2
MALAYSIA	1	1	1			2	1		1	1	1	9
MALTA	1			1	3			4	7	11	10	37
MEXICO			2		2	2	3	3	2	3	5	22
NETHERLANDS	191	136	120	198	225	211	268	234	263	316	319	2,481
NEW CALEDONIA				1	1			1		1		4
NEW ZEALAND	394	1,973	1,639	1,252	1,725	1,114	1,185	1,170	888	974	1,197	13,511
NIGERIA				1			1	1				3
NORWAY	182	252	330	257	302	345	462	452	370	507	426	3,885
OMAN	1											1
PAKISTAN	1				2			1		1	2	7
PAPUA NEW GUINEA				1		2	1	1	1			6
POLAND			1		5	1	1		1	1	6	16
PORTUGAL	2	4	5	4	5	13	12	6	18	4	18	91

cont. Number of Registered Filipino Emigrants by Year and Country of Destination.

COUNTRY	2005	2006	2007	2008	2009	2010	2011	2012	2013	2014	2015	TOTAL
QATAR			1			1						2
ROMANIA		1		7	4	4	1	7	4	5	9	42
RUSSIAN FEDERATION / USSR							1					1
SAUDI ARABIA	1	3		1	3							8
SINGAPORE	3			2	1			2				8
SLOVAK REPUBLIC								1		2	4	7
SLOVENIA	1	1		1	1		5		4	7	1	21
SOUTH AFRICA		3	1		1	3	2	3	2	4	1	20
SOUTH KOREA	480	281	576	1,482	1,458	1,565	1,618	1,632	1,419	982	700	12,193
SPAIN	685	898	933	907	970	693	871	808	868	834	1,005	9,472
SRI LANKA					1				1			2
SUDAN								1				1
SWEDEN	252	347	374	379	461	416	401	448	315	333	287	4,013
SWITZERLAND	106	100	96	84	150	131	167	198	199	160	194	1,585
SYRIA			1				1					2
TAIWAN (ROC)	71	187	62	81	228	189	193	158	143	182	277	1,771
TRINIDAD AND TOBAGO								2				2
TURKEY		1	3	1		1	3		3	4	13	29
TURKS AND CAICOS ISLANDS										1		1
UKRAINE				1								1
UNITED ARAB EMIRATES	8	17	9	10	7	9				1		61
UNITED KINGDOM	478	556	654	552	646	817	749	881	829	783	936	7,881
UNITED STATES OF AMERICA	40,280	49,522	46,420	34,201	40,598	42,007	38,463	39,124	38,637	39,594	40,814	449,660
GRAND TOTAL	69,028	82,967	80,599	70,800	79,718	86,075	83,410	83,640	78,228	80,689	92,998	888,152

**NUMBER OF REGISTERED FILIPINO EMIGRANTS
BY REGION / PROVINCE OF ORIGIN IN THE PHILIPPINES: 2005 - 2015**

PROVINCE	2005	2006	2007	2008	2009	2010	2011	2012	2013	2014	2015	TOTAL
REGION I - ILOCOS REGION												
ILOCOS NORTE	1,726	1,984	2,314	1,979	2,391	3,274	2,739	2,416	2,389	2,380	2,730	26,322
ILOCOS SUR	1,109	1,199	1,157	1,142	1,397	1,664	1,431	1,337	1,322	1,408	1,575	14,741
LA UNION	966	1,043	1,126	1,017	1,152	1,470	1,414	1,231	948	1,265	1,559	13,191
PANGASINAN	3,234	3,631	3,790	3,303	3,963	4,491	3,985	3,922	3,663	3,685	4,690	42,357
Sub-Total Ilocos Region	7,035	7,857	8,387	7,441	8,903	10,899	9,569	8,906	8,322	8,738	10,554	96,611
REGION II - CAGAYAN VALLEY												
BATANES	-	9	5	8	10	5	9	4	9	13	12	84
CAGAYAN	356	527	452	476	603	633	727	723	627	616	1,156	6,896
ISABELA	549	712	731	616	851	1,011	916	913	835	848	1,403	9,385
NUEVA VIZCAYA	223	348	295	259	395	392	416	428	343	476	651	4,226
QUIRINO	40	44	45	57	47	59	47	43	62	90	141	675
Sub-Total Cagayan Valley	1,168	1,640	1,528	1,416	1,906	2,100	2,115	2,111	1,876	2,043	3,363	21,266
REGION III - CENTRAL LUZON												
AURORA	13	21	34	23	37	35	39	47	35	41	71	396
BATAAN	545	677	713	599	701	849	747	817	656	735	862	7,901
BULACAN	2,247	2,947	2,832	2,604	2,841	3,182	3,062	3,180	2,891	3,029	3,598	32,413
NUEVA ECIJA	1,173	1,423	1,423	1,387	1,612	1,567	1,641	1,607	1,531	1,571	2,048	16,983

cont. Number of Registered Filipino Emigrants by Region/Province of Origin in the Philippines.

PROVINCE	2005	2006	2007	2008	2009	2010	2011	2012	2013	2014	2015	TOTAL
PAMPANGA	3,510	3,854	4,315	3,568	4,431	4,752	4,461	4,619	4,368	4,636	4,986	47,500
TARLAC	1,192	1,294	1,389	1,283	1,647	1,927	1,763	1,662	1,600	1,641	1,943	17,341
ZAMBALES	1,472	1,749	1,840	1,434	1,658	1,856	1,567	1,495	1,543	1,543	1,691	17,848
Sub-Total Central Luzon	10,152	11,965	12,546	10,898	12,927	14,168	13,280	13,427	12,624	13,196	15,199	140,382
REGION IV-A CALABARZON												
BATANGAS	1,649	2,067	2,313	2,317	3,023	3,452	3,715	3,460	3,358	3,339	3,282	31,975
CAVITE	3,657	4,506	4,520	3,931	4,946	5,130	5,288	4,895	4,623	5,001	5,146	51,643
LAGUNA	2,679	3,077	3,076	2,900	3,125	3,811	3,574	3,393	3,598	3,389	3,716	36,338
QUEZON	635	688	669	658	821	836	879	889	881	852	1,030	8,838
RIZAL	2,705	3,162	2,964	2,805	3,107	3,428	3,216	3,033	3,102	3,064	3,446	34,032
Sub-Total CALABARZON	11,325	13,500	13,542	12,611	15,022	16,657	16,672	15,670	15,562	15,645	16,620	162,826
REGION IV-B MIMAROPA												
MARINDUQUE	50	17	26	17	40	36	38	46	41	67	43	421
OCCIDENTAL MINDORO	53	51	50	39	68	73	88	77	62	77	105	743
ORIENTAL MINDORO	195	158	220	220	275	369	382	416	364	303	395	3,297
PALAWAN	65	118	75	82	110	124	132	123	144	125	136	1,234
ROMBLON	32	34	41	44	51	39	42	40	34	31	44	432
Sub-Total MIMAROPA	395	378	412	402	544	641	682	702	645	603	723	6,127

cont. Number of Registered Filipino Emigrants by Region/Province of Origin in the Philippines.

PROVINCE	2005	2006	2007	2008	2009	2010	2011	2012	2013	2014	2015	TOTAL
REGION V - BICOL REGION												
ALBAY	327	418	302	225	355	308	385	307	321	358	486	3,792
CAMARINES NORTE	90	153	164	181	143	139	166	164	188	169	187	1,744
CAMARINES SUR	515	669	639	509	623	545	685	729	646	663	851	7,074
CATANDUANES	29	27	37	36	46	43	51	46	48	85	48	496
MASBATE	45	44	41	36	56	63	49	81	58	66	75	614
SORSOGON	100	127	111	133	140	138	153	149	180	166	145	1,542
Sub-Total Bicol Region	1,106	1,438	1,294	1,120	1,363	1,236	1,489	1,476	1,441	1,507	1,792	15,262
REGION VI - WESTERN VISAYAS												
AKLAN	120	165	204	190	191	230	215	215	258	283	321	2,392
ANTIQUE	110	93	132	107	95	118	128	146	140	196	221	1,486
CAPIZ	132	229	160	155	220	235	241	282	213	337	387	2,591
GUIMARAS	26	34	23	29	33	37	36	43	44	56	85	446
ILOILO	1,173	1,443	1,173	964	1,104	1,284	1,187	1,419	1,155	1,382	1,586	13,870
NEGROS OCCIDENTAL	906	1,394	1,115	894	930	1,108	1,206	1,239	1,081	1,297	1,519	12,689
Sub-Total Western Visayas	2,467	3,358	2,807	2,339	2,573	3,012	3,013	3,344	2,891	3,551	4,119	33,474
REGION VII - CENTRAL VISAYAS												
BOHOL	586	655	612	536	536	548	654	683	673	678	891	7,052
CEBU	3,805	4,836	4,200	3,411	3,842	3,953	3,976	4,373	4,037	4,091	4,538	45,062
NEGROS ORIENTAL	461	697	522	384	471	570	542	591	516	545	649	5,948

cont. Number of Registered Filipino Emigrants by Region/Province of Origin in the Philippines.

PROVINCE	2005	2006	2007	2008	2009	2010	2011	2012	2013	2014	2015	TOTAL
SIQUIJOR	60	68	64	60	68	63	78	64	55	69	71	720
Sub-Total Central Visayas	4,912	6,256	5,398	4,391	4,917	5,134	5,250	5,711	5,281	5,383	6,149	58,782
Region VIII - EASTERN VISAYAS												
BILIRAN	30	31	61	64	73	64	72	72	87	68	87	709
EASTERN SAMAR	47	54	63	64	88	102	117	181	127	169	139	1,151
LEYTE	623	881	840	803	813	827	739	840	817	786	944	8,913
NORTHERN SAMAR	25	66	49	51	52	59	67	81	56	78	91	675
SAMAR (WESTERN SAMAR)	85	95	135	124	139	161	171	151	180	169	153	1,563
SOUTHERN LEYTE	97	126	156	135	166	142	135	137	132	165	207	1,598
Sub-Total Eastern Visayas	907	1,253	1,304	1,241	1,331	1,355	1,301	1,462	1,399	1,435	1,621	14,609
REGION IX - ZAMBOANGA PENINSULA												
ZAMBOANGA DEL NORTE	176	255	278	263	298	262	324	370	320	302	358	3,206
ZAMBOANGA DEL SUR	394	710	477	379	431	364	501	502	440	444	557	5,199
ZAMBOANGA SIBUGAY	37	45	36	34	47	39	48	81	45	69	68	549
ISABELA CITY, (BASILAN) (a)	19	12	14	9	13	12	2	3	12	7	5	108
Sub-Total Zamboanga Peninsula	626	1,022	805	685	789	677	875	956	817	822	988	9,062
REGION X - NORTHERN MINDANAO												
BUKIDNON	151	297	253	227	212	211	245	282	287	266	340	2,771
CAMIGUIN	25	32	24	29	24	27	25	28	29	38	30	311

cont. Number of Registered Filipino Emigrants by Region/Province of Origin in the Philippines.

PROVINCE	2005	2006	2007	2008	2009	2010	2011	2012	2013	2014	2015	TOTAL
LANA O DEL NORTE	367	493	358	309	338	290	354	372	339	357	411	3,988
MISAMIS OCCIDENTAL	271	328	308	277	276	310	286	358	320	261	278	3,273
MISAMIS ORIENTAL	733	1,110	1,025	796	958	897	907	1,022	910	943	1,111	10,412
Sub-Total Northern Mindanao	1,547	2,260	1,968	1,638	1,808	1,735	1,817	2,062	1,885	1,865	2,170	20,755
REGION XI - DAVAO REGION												
COMPOSTELA VALLEY	89	96	92	72	83	99	119	113	122	119	152	1,156
DAVAO DEL NORTE	326	405	401	392	357	356	391	456	435	438	543	4,500
DAVAO DEL SUR	1,815	2,129	2,191	2,123	1,864	1,942	2,102	2,535	2,057	2,181	2,642	23,581
DAVAO ORIENTAL	70	76	79	76	63	64	72	93	75	85	112	865
Sub-Total Davao Region	2,300	2,706	2,763	2,663	2,367	2,461	2,684	3,197	2,689	2,823	3,449	30,102
REGION XII - SOCCSKSARGEN												
COTABATO CITY (a)	57	76	44	38	27	57	31	47	29	42	50	498
NORTH COTABATO	125	174	154	150	127	183	186	222	177	185	249	1,932
SARANGANI	54	48	95	80	47	41	67	54	42	62	75	665
SOUTH COTABATO	357	524	536	463	500	528	487	493	595	574	729	5,786
SULTAN KUDARAT	52	55	62	69	96	61	62	68	84	95	118	822
Sub-Total SOCCSKSARGEN	645	877	891	800	797	870	833	884	927	958	1,221	9,703
REGION XIII - CARAGA												
AGUSAN DEL NORTE	212	370	316	281	341	283	298	318	340	298	361	3,418

cont. Number of Registered Filipino Emigrants by Region/Province of Origin in the Philippines.

PROVINCE	2005	2006	2007	2008	2009	2010	2011	2012	2013	2014	2015	TOTAL
AGUSAN DEL SUR	50	72	76	102	88	99	97	109	108	97	143	1,041
SURIGAO DEL NORTE (still includes Dinagat Islands) (b)	134	169	132	119	136	184	170	183	147	168	183	1,725
SURIGAO DEL SUR	110	128	140	146	150	132	137	149	144	154	159	1,549
Sub-Total Caraga	506	739	664	648	715	698	702	759	739	717	846	7,733
AUTONOMOUS REGION IN MUSLIM MINDANAO (ARMM)												
BASILAN	6	10	13	1	2	7	2	8		2		51
LANAO DEL SUR	1	1			2	1	1	5	3	5	13	32
MAGUINDANAO (still includes Shariff Kabunsuan) (c)	31	15	19	4	5	15	13	12	10	13	28	165
SULU				1	2	1	2	6		2		14
TAWI-TAWI				13	2	2		2	3			22
Sub-Total ARMM	38	26	32	19	13	26	18	33	16	22	41	284
Cordillera Administrative Region (CAR)												
ABRA	150	206	180	187	183	198	250	240	200	226	300	2,320
APAYAO	16	19	25	14	27	37	20	43	27	47	64	339
BENGUET	1,144	1,495	1,233	1,117	1,255	1,627	1,640	1,524	1,467	1,445	2,164	16,111
IFUGAO	46	47	36	37	37	50	74	79	47	79	124	656
KALINGA	25	25	22	25	51	61	119	49	59	65	122	623

cont. Number of Registered Filipino Emigrants by Region/Province of Origin in the Philippines.

PROVINCE	2005	2006	2007	2008	2009	2010	2011	2012	2013	2014	2015	TOTAL
MOUNTAIN PROVINCE	33	39	18	47	34	48	30	72	29	56	132	538
Sub-Total CAR	1,414	1,831	1,514	1,427	1,587	2,021	2,133	2,007	1,829	1,918	2,906	20,587
NATIONAL CAPITAL REGION												
BINONDO, (NCR, FIRST DISTRICT)	90	63	83	93	72	53	55	82	57	53	50	751
ERMITA, (NCR, FIRST DISTRICT)	72	48	42	34	32	32	56	63	47	51	43	520
INTRAMUROS, (NCR, FIRST DISTRICT)	41	15	8	5	15	6	7	3	11	7	5	123
MALATE, (NCR, FIRST DISTRICT)	359	403	397	315	340	322	279	339	279	254	322	3,609
PACO, (NCR, FIRST DISTRICT)	161	199	205	132	180	172	191	143	150	153	182	1,868
PANDACAN, (NCR, FIRST DISTRICT)	140	186	141	132	174	160	165	137	115	172	129	1,651
PORT AREA, (NCR, FIRST DISTRICT)				2	3	1		3	1	2	4	16
QUIAPO, (NCR, FIRST DISTRICT)	36	25	41	23	25	29	32	41	46	30	30	358
SAMPALOC, (NCR, FIRST DISTRICT)	1,271	1,403	1,340	1,040	1,141	1,103	1,069	995	856	896	869	11,983
SAN MIGUEL, (NCR, FIRST DISTRICT)	21	33	53	18	30	37	41	22	28	16	26	325
SAN NICOLAS, (NCR, FIRST DISTRICT)		2		3						8		13
SANTA ANA, (NCR, FIRST DISTRICT)	265	237	254	216	217	180	193	205	158	202	256	2,383

cont. Number of Registered Filipino Emigrants by Region/Province of Origin in the Philippines.

PROVINCE	2005	2006	2007	2008	2009	2010	2011	2012	2013	2014	2015	TOTAL
SANTA CRUZ, (NCR, FIRST DISTRICT)	296	321	282	248	257	227	233	210	177	193	244	2,688
TONDO, (NCR, FIRST DISTRICT)	685	716	779	634	725	622	669	637	591	593	655	7,306
MANILA, (NCR, FIRST DISTRICT)	8											8
NCR, FIRST DISTRICT			11									11
CITY OF MANDALUYONG, (NCR SECOND DISTRICT)	680	776	772	766	908	869	681	692	642	688	761	8,235
CITY OF MARIKINA, (NCR SECOND DISTRICT)	887	1,012	969	845	893	884	852	763	745	728	830	9,408
CITY OF PASIG, (NCR SECOND DISTRICT)	1,267	1,669	1,452	1,113	1,210	1,350	1,183	1,141	1,100	1,044	1,372	13,901
QUEZON CITY, (NCR SECOND DISTRICT)	6,313	7,289	6,870	5,638	5,923	6,125	5,811	5,696	5,381	5,013	5,584	65,643
SAN JUAN, (NCR SECOND DISTRICT)	439	544	418	397	379	357	342	478	274	190	228	4,046
NCR SECOND DISTRICT	9		2									11
CITY OF VALENZUELA, (NCR THIRD DISTRICT)	669	720	735	677	679	755	654	785	712	752	864	8,002
KALOOKAN CITY, (NCR THIRD DISTRICT)	1,427	1,788	1,765	1,665	1,669	1,801	1,695	1,597	1,626	1,720	1,844	18,597
MALABON, (NCR THIRD DISTRICT)	368	420	395	337	360	377	371	404	296	331	366	4,025

cont. Number of Registered Filipino Emigrants by Region/Province of Origin in the Philippines.

PROVINCE	2005	2006	2007	2008	2009	2010	2011	2012	2013	2014	2015	TOTAL
NAVOTAS, (NCR THIRD DISTRICT)	177	242	186	206	179	177	210	222	152	188	207	2,146
NCR THIRD DISTRICT	2		1									3
CITY OF LAS PIÑAS, (NCR FOURTH DISTRICT)	1,432	1,795	1,736	1,465	1,411	1,541	1,337	1,365	1,224	1,426	1,405	16,137
CITY OF MAKATI, (NCR FOURTH DISTRICT)	1,425	1,493	1,371	1,296	1,298	1,266	1,203	1,145	1,128	1,244	1,320	14,189
CITY OF MUNTINLUPA, (NCR FOURTH DISTRICT)	677	694	785	575	691	739	705	616	572	603	656	7,313
CITY OF PARAÑAQUE, (NCR FOURTH DISTRICT)	1,556	1,677	1,591	1,453	1,452	1,414	1,263	1,343	1,210	1,176	1,248	15,383
PASAY CITY, (NCR FOURTH DISTRICT)	1,076	1,349	1,270	948	835	843	698	773	785	750	661	9,988
PATEROS, (NCR FOURTH DISTRICT)	124	129	130	100	102	113	112	87	79	97	85	1,158
TAGUIG, (NCR FOURTH DISTRICT)	508	613	660	677	863	815	861	944	835	883	990	8,649
NCR FOURTH DISTRICT	4											4
Sub-Total National Capital Region	22,485	25,861	24,744	21,053	22,063	22,370	20,968	20,931	19,277	19,463	21,236	240,451
Region / Province Not Reported				8	93	15	9	2	8		1	136
TOTAL	69,028	82,967	80,599	70,800	79,718	86,075	83,410	83,640	78,228	80,689	92,998	888,152

Notes:
 (a) - Isabela City (Region IX) and Cotabato City (Region XII) have been separated from their respective mother provinces-- Basilan and Maguindanao (both ARMM) under the present regional configuration.
 (b) - Republic Act No. 9355, ratified through COMELEC plebiscite on 2 December 2006, created the Province of Dinagat Islands. It is composed of 7 municipalities coming from the existing province of Surigao del Norte.
 (c) - Muslim Mindanao Act No. 201, ratified through COMELEC plebiscite on 28 October 2006, created the Province of Shariff Kabunsuan. It is composed of 10 municipalities coming from the existing province of Maguindanao.

Source: Commission on Filipinos Overseas

MARRIAGE MIGRANTS (2005-2015)

Filipino marriage migrants are those leaving the Philippines to join their foreign spouse or partner overseas. They are fiancé/e, spouse or partner (of a foreign national or former Filipino citizen) visa holders.

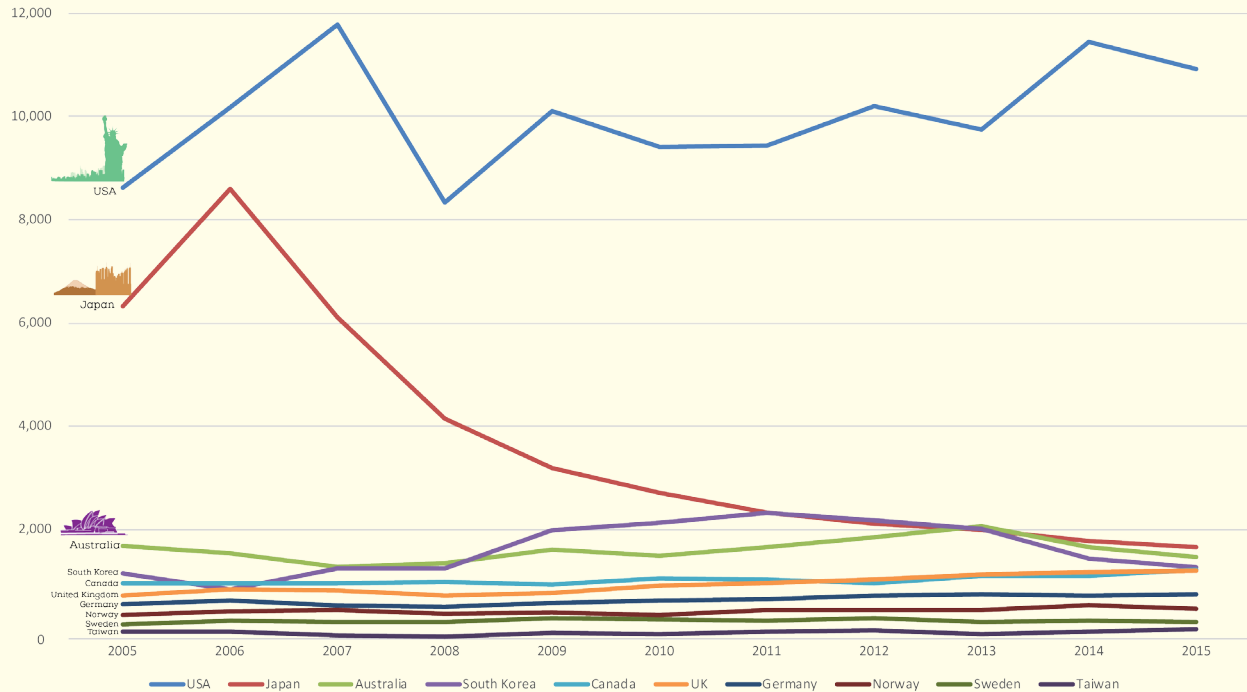
TOP 10 NATIONALITIES OF SPOUSES OR PARTNERS OF FOREIGN NATIONALS

(2005-2015)

Filipinos are most likely to marry American, Japanese and Australian citizens.



MIGRATION TREND OF TOP 10 NATIONALITIES OF SPOUSES OR PARTNERS OF FOREIGN NATIONALS (2005-2015)



FILIPINO SPOUSES AND OTHER PARTNERS OF FOREIGN NATIONALS BY SEX

(2005-2015)

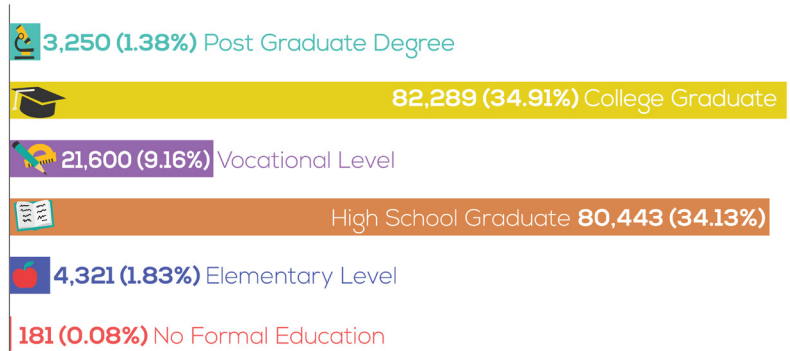


Majority of marriage migrants (92%) are female.

NUMBER OF REGISTERED FILIPINO SPOUSES BY EDUCATIONAL ATTAINMENT

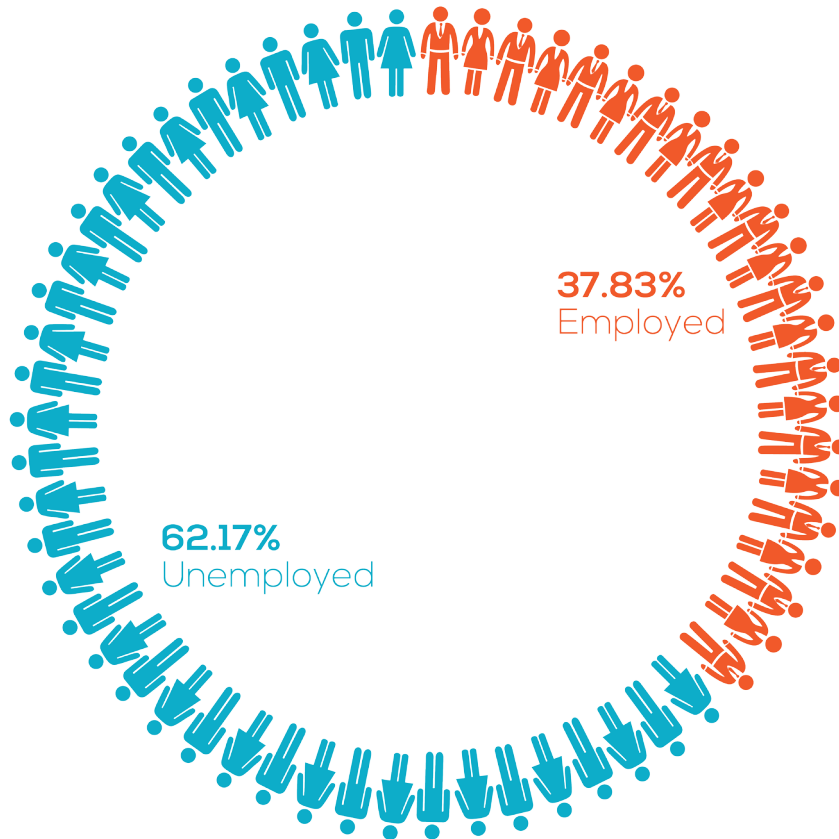
(2005-2015)

36% of marriage migrants are college graduates, while 34.13% are high-school graduates.



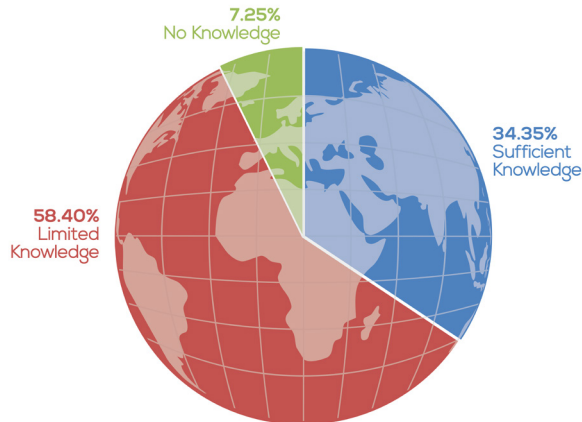
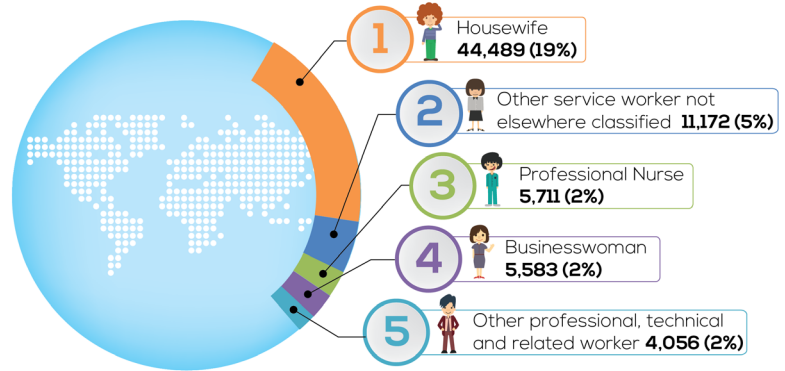
RATIO OF EMPLOYED VS. UNEMPLOYED FILIPINO SPOUSES OR PARTNERS OF FOREIGN NATIONALS PRIOR TO MIGRATION (2005-2015)

62% of marriage migrants have no professional work experience prior to migration.



TOP 5 OCCUPATIONS OF FILIPINO SPOUSES OR PARTNERS OF FOREIGN NATIONALS (2005-2015)

19% of marriage migrants are housewives.

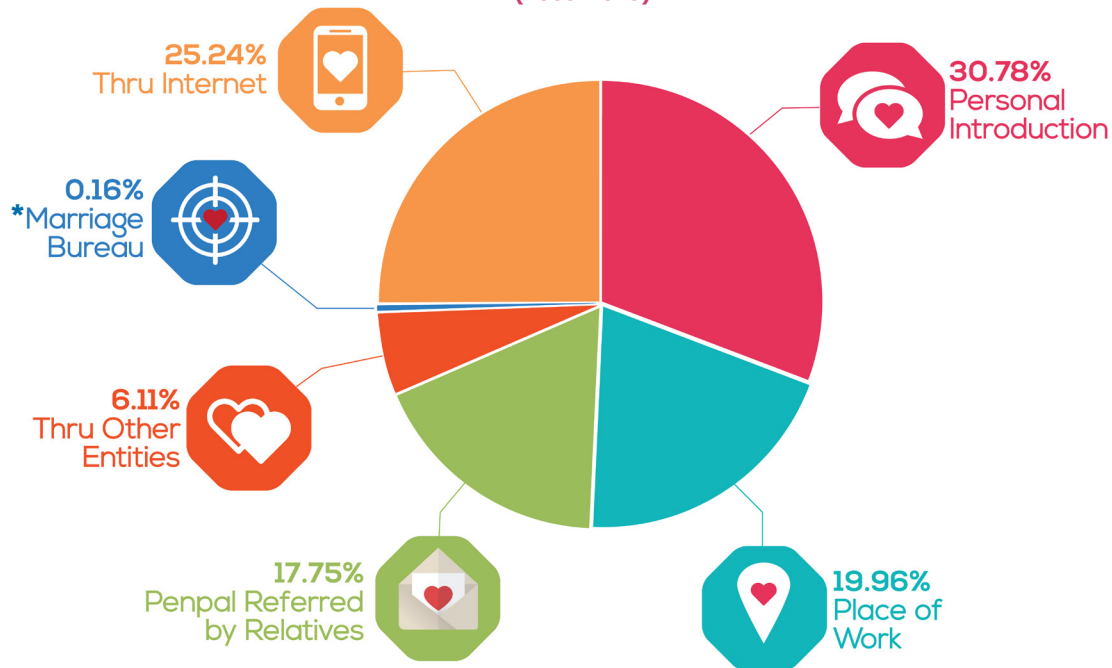


EXTENT OF KNOWLEDGE ABOUT HOST COUNTRY OF FILIPINO SPOUSES OR PARTNERS OF FOREIGN NATIONALS (2005-2015)

58% of marriage migrants have limited or no knowledge about the country they are migrating to.

MANNER OF INTRODUCTION BETWEEN FILIPINOS AND THEIR FOREIGN SPOUSES OR PARTNERS

(2005-2015)



**25% of marriage migrants have met their partners thru social media or the internet.
30% have met thru personal introduction.**

**Marriage bureau is a matchmaking service agency where single people could find a prospective life partner or spouse, usually for a fee.
Note: This is prohibited under Republic Act 6955 (as amended by RA 10906) or the "Anti-Mail Order Spouse Law," which makes it illegal for anyone to have a business matching a Filipino to a foreign national for marriage or common law partnership.*

**NUMBER OF FILIPINO SPOUSES OR PARTNERS OF FOREIGN NATIONALS
BY MAJOR COUNTRY: 2005 - 2015**

YEAR	USA	Japan	Australia	S.Korea	Canada	UK	Germany	Norway	Sweden	Taiwan	Others	TOTAL	% Change
2005	8,621	6,322	1,677	725	974	506	467	222	210	293	1,083	21,100	
2006	10,190	8,601	1,541	415	988	619	528	284	278	282	1,178	24,904	18.0%
2007	11,789	6,114	1,267	804	978	600	441	314	269	207	1,144	23,927	-3.9%
2008	8,333	4,142	1,348	809	1,011	500	417	253	256	195	1,172	18,436	-22.9%
2009	10,111	3,197	1,596	1,551	960	556	471	275	343	261	1,289	20,610	11.8%
2010	9,411	2,698	1,489	1,694	1,089	702	521	209	306	247	1,410	19,776	-4.0%
2011	9,442	2,322	1,659	1,903	1,061	736	542	313	279	292	1,685	20,234	2.3%
2012	10,194	2,105	1,853	1,754	990	818	616	307	339	301	2,132	21,409	5.8%
2013	9,743	1,992	2,054	1,572	1,136	915	654	301	265	251	2,438	21,321	-0.4%
2014	11,456	1,779	1,659	1,005	1,131	969	630	408	286	293	2,760	22,376	4.9%
2015	10,920	1,658	1,456	845	1,247	973	652	345	265	336	2,905	21,602	-3.5%
TOTAL	110,210	40,930	17,599	13,077	11,565	7,894	5,939	3,231	3,096	2,958	19,196	235,695	
%	46.76%	17.37%	7.47%	5.55%	4.91%	3.35%	2.52%	1.37%	1.31%	1.26%	8.14%	100%	

**NUMBER OF FILIPINO SPOUSES OR PARTNERS OF FOREIGN NATIONALS
BY SEX: 2005 - 2015**

SEX	2005	2006	2007	2008	2009	2010	2011	2012	2013	2014	2015	TOTAL	%
MALE	1,818	1,408	2,199	1,582	1,807	1,761	1,645	1,940	1,554	2,011	1,985	19,710	8.36%
FEMALE	19,282	23,496	21,618	16,854	18,803	18,015	18,589	19,469	19,767	20,365	19,617	215,875	91.59%
TOTAL	21,100	24,904	23,927	18,436	20,610	19,776	20,234	21,409	21,321	22,376	21,602	235,695	100%

Source: Commission on Filipinos Overseas (CFO)

NUMBER OF FILIPINO SPOUSES OR PARTNERS OF FOREIGN NATIONALS CLASSIFIED BY MANNER OF INTRODUCTION: 2005 - 2015

MANNER OF INTRODUCTION	2005	2006	2007	2008	2009	2010	2011	2012	2013	2014	2015	TOTAL	%
Personal Introduction	6,374	6,751	7,705	5,772	6,919	6,353	6,368	6,790	6,285	6,656	6,656	72,548	30.8%
Place of Work	5,704	5,772	5,677	4,154	3,826	3,640	3,337	3,536	3,801	3,851	3,851	47,047	20.0%
Penpal Referred by Relative	4,661	5,117	4,535	3544	3749	3492	3493	3525	3413	3261	3261	41,833	17.7%
Penpal Thru Ads/ Columns/ Penpal Clubs	335	491	270	173	146	111	93	114	89	104	104	2,012	0.9%
Marriage Bureau *	24	7	33	20	37	38	50	58	44	44	44	380	0.2%
Thru Internet	3,049	2,889	4,679	4127	5157	5228	5845	6349	6939	7729	7729	59,488	25.2%
Thru Other Entities	181	255	336	267	281	247	370	414	412	440	440	3,551	1.5%
Not Reported / No Response	772	3,623	692	379	495	667	678	623	338	291	291	8,837	3.7%
TOTAL	21,100	24,904	23,927	18,436	20,610	19,776	20,234	21,409	21,321	22,376	21,602	235,695	100%

* Republic Act 6955, which made unlawful the matching of Filipino women for marriage to foreign nationals on a mail-order basis and other similar practices, was signed into law in June 1990.

EXTENT OF KNOWLEDGE OF FILIPINO SPOUSES OR PARTNERS OF FOREIGN NATIONALS ABOUT THEIR HOST COUNTRY: 2005 - 2015

EXTENT OF KNOWLEDGE	2005	2006	2007	2008	2009	2010	2011	2012	2013	2014	2015	TOTAL	%
Sufficient	6,778	7,691	8,339	5,581	4,389	3,817	7,203	8,872	8,890	9,779	9,624	80,963	34.35%
Limited	12,758	14,175	13,602	11,597	14,747	14,335	11,297	11,020	11,437	11,662	11,009	137,639	58.40%
No Knowledge	1,564	3,038	1,986	1,258	1,474	1,624	1,734	1,517	994	935	969	17,093	7.25%
TOTAL	21,100	24,904	23,927	18,436	20,610	19,776	20,234	21,409	21,321	22,376	21,602	235,695	100.00%

Source: Commission on Filipinos Overseas (CFO)

**NUMBER OF FILIPINO SPOUSES OR PARTNERS OF FOREIGN NATIONALS
BY EDUCATIONAL ATTAINMENT: 2005 - 2015**

EDUCATIONAL ATTAINMENT	2005	2006	2007	2008	2009	2010	2011	2012	2013	2014	2015	TOTAL	%
No Formal Education	10	27	4	11	24	15	18	21	17	20	14	181	0.08%
Elementary Level	250	241	36	179	170	169	157	178	168	183	161	1,892	0.80%
Elementary Graduate	352	377	52	214	250	203	207	197	190	190	197	2,429	1.03%
High School Level	2,217	2,694	310	1,800	1,860	1,625	1,481	1,604	1,690	1,600	1,590	18,471	7.84%
High School Graduate	4,192	4,826	560	3,354	3,573	3,432	3,486	3,496	3,497	3,322	3,266	37,004	15.70%
Vocational Level	547	635	83	510	564	590	598	666	699	734	804	6,430	2.73%
Vocational Graduate	1,239	1,350	185	1,146	1,350	1,280	1,527	1,565	1,744	1,918	1,866	15,170	6.44%
College Level	4,144	4,555	599	3,687	4,126	3,993	4,238	4,525	4,455	4,687	4,430	43,439	18.43%
College Graduate	6,831	7,183	1,101	6,630	7,600	7,320	7,620	8,355	8,134	8,971	8,538	78,283	33.21%
Post Graduate Level	459	454	71	338	391	368	374	389	399	391	372	4,006	1.70%
Post Graduate	311	337	81	285	321	285	335	335	294	327	339	3,250	1.38%
Not Reported / No Response	21	38	7	266	356	471	193	71	31	32	21	1,507	0.64%
Others	527	2,187	20,838	16	25	25		7	3	1	4	23,633	10.03%
TOTAL	21,100	24,904	23,927	18,436	20,610	19,776	20,234	21,409	21,321	22,376	21,602	235,695	100.00%

Source: Commission on Filipinos Overseas (CFO)

NUMBER OF FILIPINO SPOUSES OR PARTNERS OF FOREIGN NATIONALS BY OCCUPATION: 2005 - 2015

MAJOR OCCUPATION GROUP	2005	2006	2007	2008	2009	2010	2011	2012	2013	2014	2015	TOTAL	%
A. EMPLOYED													
Prof'l, Tech'l, & Related Workers	2,905	2,524	383	2,213	2,618	2,504	2,514	2,596	2,472	2,830	2,805	26,364	11.19%
Managerial, Executive and Administrative Workers	253	242	42	302	544	546	849	767	584	658	685	5,472	2.32%
Clerical Workers	1,423	1,088	185	948	1,090	988	1,066	1,155	956	1,152	1,170	11,221	4.76%
Sales Workers	1,776	1,393	205	1,281	1,185	1,116	1,168	1,395	1,544	1,598	1,519	14,180	6.02%
Service Workers	4,631	4,292	628	1,512	1,798	1,668	1,879	1,968	2,049	1,930	1,498	23,853	10.12%
Agri, Animal Husbandry, Forestry Workers & Fishermen	119	116	28	110	132	126	100	105	97	117	144	1,194	0.51%
Production Process, Transport Equipment Operators, & Laborers	934	671	113	605	629	549	578	642	580	656	626	6,583	2.79%
Members of the Armed Forces	8	5	4	21	26	45	24	20	82	24	32	291	0.12%
B. UNEMPLOYED													
Housewives	5,810	5,013	938	4,540	4,662	4,560	3,927	3,277	4,785	3,845	3,021	44,378	18.83%
Retirees	41	62	13	35	64	58	67	84	94	89	121	728	0.31%
Students	188	207	40	149	214	211	302	301	298	250	223	2,383	1.01%
Out of School Youth													
Refugees													
No Occupation Reported	3,012	9,291	21,348	6,720	7,648	7,405	7,760	9,099	7,780	9,227	9,758	99,048	42.02%
TOTAL	21,100	24,904	23,927	18,436	20,610	19,776	20,234	21,409	21,321	22,376	21,602	235,695	100%

Source: Commission on Filipinos Overseas (CFO)

**NUMBER OF FILIPINO SPOUSES OR PARTNERS OF FOREIGN NATIONALS
BY AGE: 2005 - 2015**

AGE GROUP	2005	2006	2007	2008	2009	2010	2011	2012	2013	2014	2015	TOTAL	%
18 - 19	516	603	608	462	683	612	511	500	362	301	234	5,392	2.29%
20 - 24	5,068	6,206	5,411	4,002	4,430	4,357	4,370	4,341	4,088	3,743	3,337	49,353	20.94%
25 - 29	6,612	7,835	7,453	5,839	6,167	5,682	5,866	6,116	6,005	6,513	6,174	70,262	29.81%
30 - 34	3,937	4,608	4,586	3,580	4,019	3,936	4,156	4,558	4,692	5,032	4,870	47,974	20.35%
35 - 39	2,273	2,574	2,627	2,059	2,320	2,244	2,179	2,530	2,570	2,936	2,990	27,302	11.58%
40 - 44	1,170	1,393	1,488	1,292	1,388	1,375	1,465	1,550	1,643	1,689	1,725	16,178	6.86%
45 - 49	653	805	892	639	848	822	876	917	991	1,016	1,107	9,566	4.06%
50 - 54	294	385	429	330	417	420	484	541	551	664	635	5,150	2.19%
55 - 59	168	200	189	139	191	186	198	220	280	309	325	2,405	1.02%
60 - 64	70	76	80	50	76	77	72	103	93	125	128	950	0.40%
65 - 69	21	34	31	26	29	24	29	16	32	33	55	330	0.14%
70 - ABOVE	27	29	51	5	17	34	16	17	14	15	22	247	0.10%
Not Reported / No Response	291	156	82	13	25	7	12	0	0	0	0	586	0.25%
T O T A L	21,100	24,904	23,927	18,436	20,610	19,776	20,234	21,409	21,321	22,376	21,602	235,695	100%

Source: Commission on Filipinos Overseas (CFO)

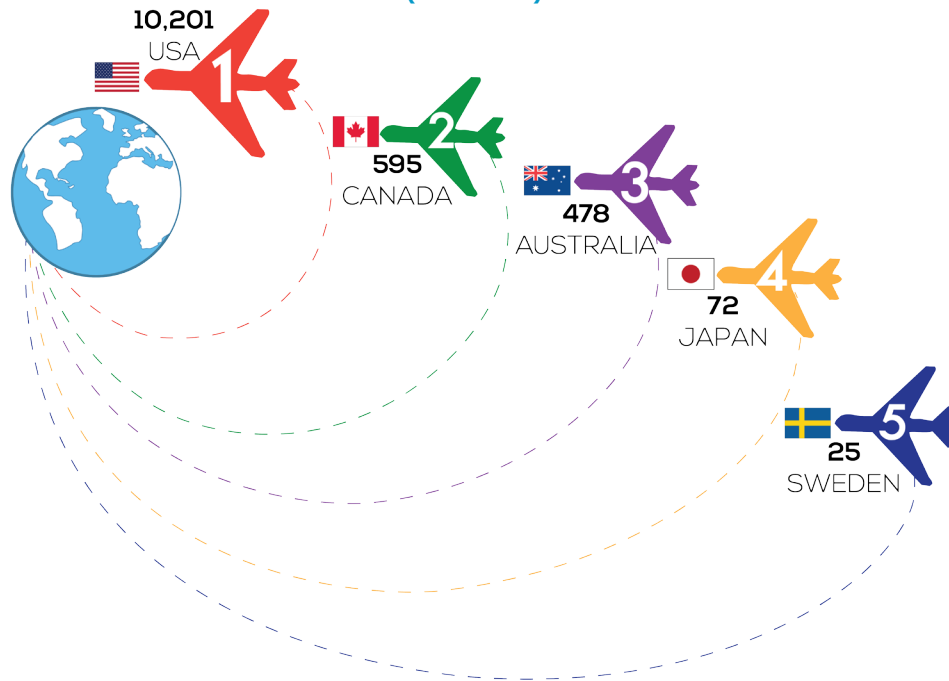
IMMIGRANT WORKERS

(2005-2015)

Filipino immigrant workers are those leaving the Philippines for skilled-migration but are qualified to stay long-term or permanently in their host country. They are employment-based immigrant visa holders.

TOP 5 DESTINATION COUNTRY OF FILIPINO IMMIGRANT WORKERS

(2005-2015)



The top 3 destination countries of immigrant workers are United States, Canada and Australia.

SEX RATIO OF IMMIGRANT WORKERS

(2005-2015)



Majority of immigrant workers are female.

TOP 5 DESTINATION COUNTRY OF IMMIGRANT WORKERS 2005 - 2015

COUNTRY	2005	2006	2007	2008	2009	2010	2011	2012	2013	2014	2015	TOTAL
UNITED STATES OF AMERICA	-	3,726	777	505	299	111	457	1097	1,084	840	1305	10,201
CANADA	-	1	2	15	132	147	71	70	69	57	31	595
AUSTRALIA	-	5	4	4	3	15	90	157	124	40	36	478
JAPAN	-					11	26	17	3	6	9	72
SWEDEN	-	1	1	3	7	3	9	0	0	1	0	25

Source: Commission on Filipinos Overseas (CFO)

NUMBER OF IMMIGRANT WORKERS BY SEX 2005 - 2015

SEX	2005	2006	2007	2008	2009	2010	2011	2012	2013	2014	2015	TOTAL	%
MALE	-	3,082	662	438	285	138	429	930	911	673	1,006	8,554	75%
FEMALE	-	662	137	97	169	153	235	434	373	278	377	2,915	25%
TOTAL	-	3,744	799	535	454	291	664	1,364	1,284	951	1,383	11,469	100%

Source: Commission on Filipinos Overseas (CFO)

NUMBER OF IMMIGRANT WORKERS BY OCCUPATION PRIOR TO MIGRATION 2005 - 2015

MAJOR OCCUPATION GROUP	2005	2006	2007	2008	2009	2010	2011	2012	2013	2014	2015	TOTAL	%
A. EMPLOYED													
Prof'l, Tech'l, & Related Workers		3,706	763	507	291	102	410	1,007	1,035	826	1,192	9,839	85.79%
Managerial, Executive and Administrative Workers		1	3	1	7	15	16	29	30	9	10	121	1.06%
Clerical Workers		5	2	3	14	16	27	22	8	15	6	118	1.03%
Sales Workers			1		1	3	3	4	2	2	1	17	0.15%
Service Workers		15	17	6	48	69	96	144	92	40	43	570	4.97%
Agri, Animal Husbandry, Forestry Workers & Fishermen					2	4	7	10	5	2	1	31	0.27%
Production Process, Transport Equipment Operators, & Laborers		15	12	16	88	77	98	142	95	46	66	655	5.71%
Members of the Armed Forces					1	4	7		2		3	17	0.15%
B. UNEMPLOYED													
Housewives		1						1	1	2	6	11	0.10%
Retirees										1		1	0.01%
Students													0.00%
Minors (Below 7 years old)													0.00%
Out of School Youth													0.00%
Refugees													0.00%
No Occupation Reported		1	1	2	2	1		5	14	8	55	89	0.78%
TOTAL		- 3,744	799	535	454	291	664	1,364	1,284	951	1,383	11,469	100.00%

Source: Commission on Filipinos Overseas (CFO)

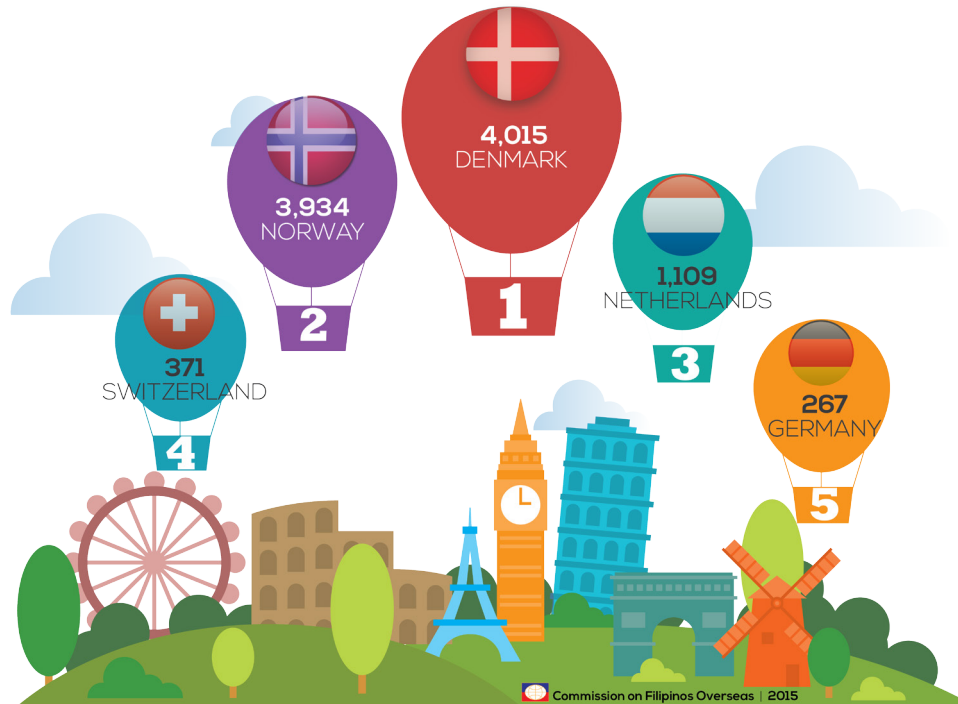
AU PAIRS

(2012-2015)

Filipino au pairs are those 18 to 30 years old, unmarried and without children, and is placed under a cultural exchange arrangement with a host family for a maximum stay of two years.

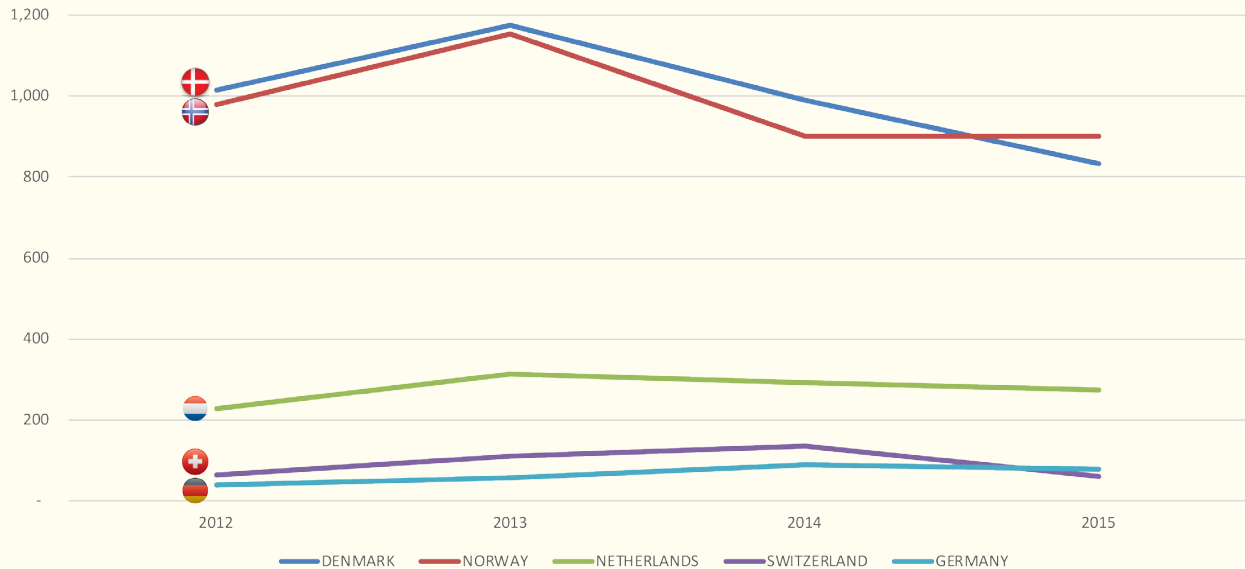
TOP 5 DESTINATION COUNTRY OF AU PAIRS

(2012-2015)



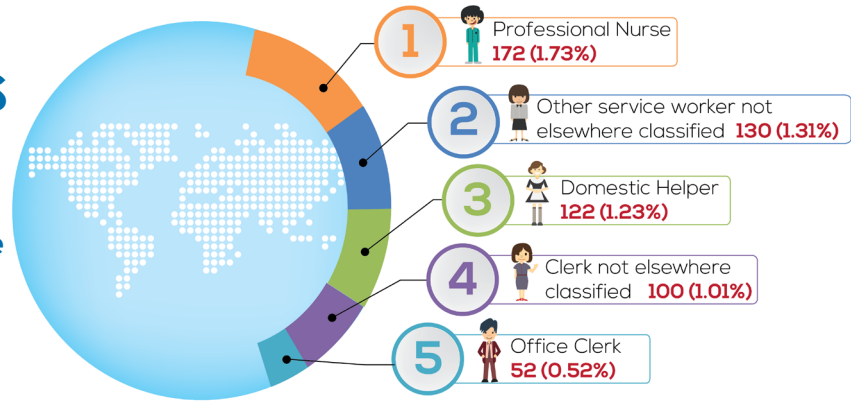
Filipino au pairs are mainly bound for Denmark, Norway and The Netherlands.

TOP 5 DESTINATION COUNTRY OF AU PAIRS (2012-2015)



TOP 5 OCCUPATIONS OF AU PAIRS (2012-2015)

Professional nurses and service workers are the top occupation of Filipino au pairs prior to migration.



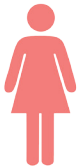
EDUCATIONAL ATTAINMENT OF AU PAIRS (2012-2015)



About 50% of au pairs are college graduates.

SEX RATIO OF AU PAIRS

(2012-2015)



97%
Female



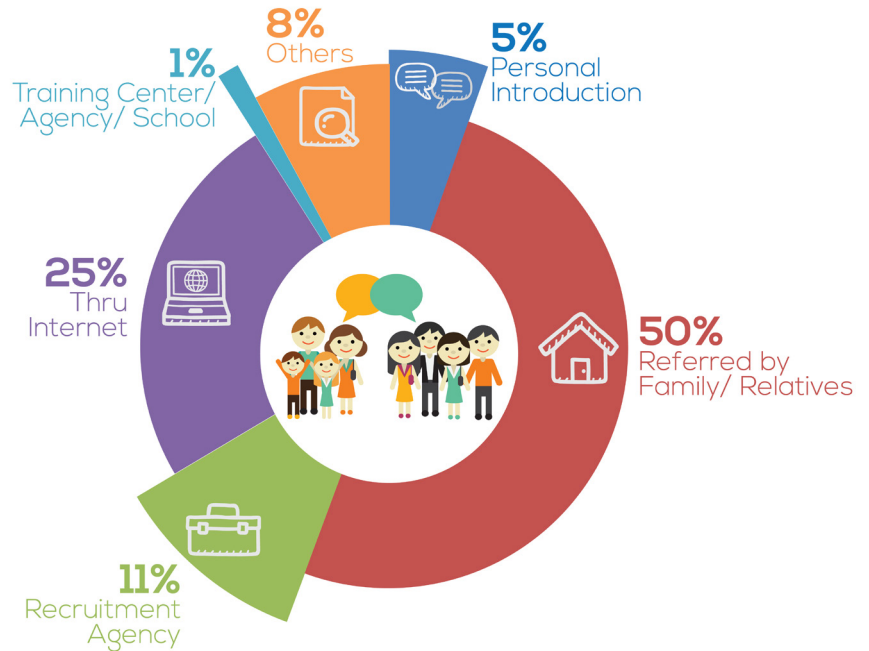
3%
Male



Majority of au pairs are female.

AU PAIR'S BY MODE OF INTRODUCTION TO HOST FAMILY (2012-2015)

50% of au pairs were referred by their relatives their host family; 25% got to know their host family thru the internet.



Note: The CFO does not encourage prospective au pairs to seek the services of brokers or go-betweens in applying for the Au Pair program.

TOP 5 DESTINATION COUNTRY OF AU PAIRS 2012 - 2015

COUNTRY	2012	2013	2014	2015	TOTAL
DENMARK	1,015	1,177	989	834	4,015
NORWAY	978	1,153	902	901	3,934
NETHERLANDS	229	315	291	274	1,109
SWITZERLAND	66	111	134	60	371
GERMANY	39	59	89	80	267

Source: Commission on Filipinos Overseas (CFO)

TOP 5 OCCUPATION OF AU PAIRS 2012 - 2015

PROFESSION	2012	2013	2014	2015	TOTAL
PROFESSIONAL NURSE	36	47	56	33	172
OTHER SERVICE WORKER NOT ELSEWHERE CLASSIFIED	44	54	18	14	130
DOMESTIC HELPER	29	22	33	38	122
CLERK NOT ELESWHERE CLASSIFIED	21	17	29	33	100
OFFICE CLERK	9	7	14	22	52

Source: Commission on Filipinos Overseas (CFO)

NUMBER OF AU PAIRS BY EDUCATIONAL ATTAINMENT 2012 - 2015

EDUCATIONAL ATTAINMENT	2012	2013	2014	2015	TOTAL
Elementary Graduate			1	1	2
High School Level	71	72	71	50	264
High School Graduate	387	377	324	291	1,379
Vocational Level	64	54	51	47	216
Vocational Graduate	264	346	297	271	1,178
College Level	496	566	473	411	1,946
College Graduate	1,055	1,430	1,230	1,168	4,883
Post Graduate Level	5	14	20	14	53
Post Graduate	1	1	4	2	8
Not Reported / No Response	5	1		1	7
TOTAL	2,348	2,861	2,471	2,256	9,936

Source: Commission on Filipinos Overseas (CFO)

NUMBER OF AU PAIRS BY SEX 2012 - 2015

SEX	2012	2013	2014	2015	TOTAL	%
FEMALE	2,256	2,779	2,402	2,193	9,630	97%
MALE	92	82	69	63	306	3%
TOTAL	2,348	2,861	2,471	2,256	9,936	100%

Source: Commission on Filipinos Overseas (CFO)

NUMBER OF AU PAIR'S MODE OF INTRODUCTION TO THE HOST FAMILY 2012 - 2015

PROFESSION	2012	2013	2014	2015	TOTAL	%
Personal Introduction	161	163	109	103	536	5%
Referred by Family/Relatives	1,337	1,505	1,155	978	4,975	50%
Recruitment Agency	203	292	286	288	1,069	11%
Thru Internet	466	665	665	632	2,428	25%
Training Center/Agency/ School	22	33	31	24	110	1%
Others	159	203	225	231	818	8%
TOTAL	2,348	2,861	2,471	2,256	9,936	100%

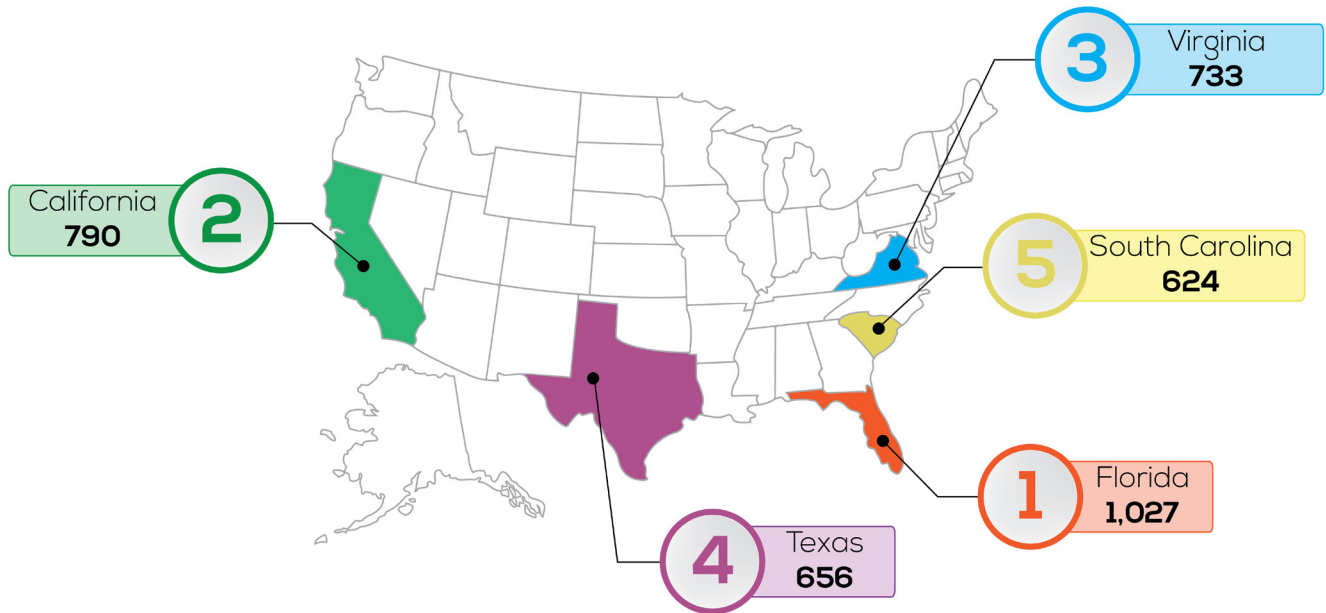
Source: Commission on Filipinos Overseas (CFO)

EXCHANGE VISITOR PROGRAM PARTICIPANTS

(2014-2015)

Filipino EVP participants are J1-visa holders participating in the EVP Program, an international exchange program administered by the US. The purpose of the program is to increase mutual understanding between the people of the US and the people of other countries, including the Philippines, by means of educational and cultural exchanges.

TOP 5 US STATE DESTINATION OF EVP PARTICIPANTS (2014-2015)

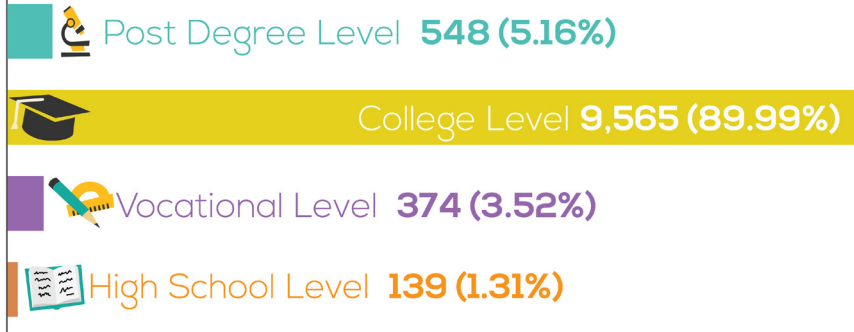



Florida, California and Virginia are the top 3 state destinations of EVP participants.

NUMBER OF EVP PARTICIPANTS BY EDUCATIONAL ATTAINMENT

(2014-2015)

95% of EVP participants have reached college level.



 **69%**
Female



 **31%**
Male

SEX RATIO OF EVP PARTICIPANTS

(2014-2015)

Majority of EVP participants are female.

**TOP 5 DESTINATION STATES OF EVP PARTICIPANTS
2014 - 2015**

US State	2014	2015	TOTAL
FLORIDA	374	653	1027
CALIFORNIA	282	508	790
VIRGINIA	340	393	733
TEXAS	259	397	656
SOUTH CAROLINA	334	290	624

Source: Commission on Filipinos Overseas (CFO)

**NUMBER OF EVP PARTICIPANTS BY SEX
2014 - 2015**

SEX	2014	2015	TOTAL	%
FEMALE	2,941	4,341	7,282	69%
MALE	1,401	1,946	3,347	31%
TOTAL	4,342	6,287	10,629	100%

Source: Commission on Filipinos Overseas (CFO)

**NUMBER OF EVP PARTICIPANTS BY EDUCATIONAL ATTAINMENT
2014 - 2015**

EDUCATIONAL ATTAINMENT	2014	2015	TOTAL
High School Level	65	53	118
High School Graduate	6	15	21
Vocational Level	14	3	17
Vocational Graduate	203	154	357
College Level	3,084	4,523	7,607
College Graduate	724	1,234	1,958
Post Graduate Level	82	111	193
Post Graduate	162	193	355
Not Reported / No Response	2	1	3
TOTAL	4,342	6,287	10,629

Source: Commission on Filipinos Overseas (CFO)

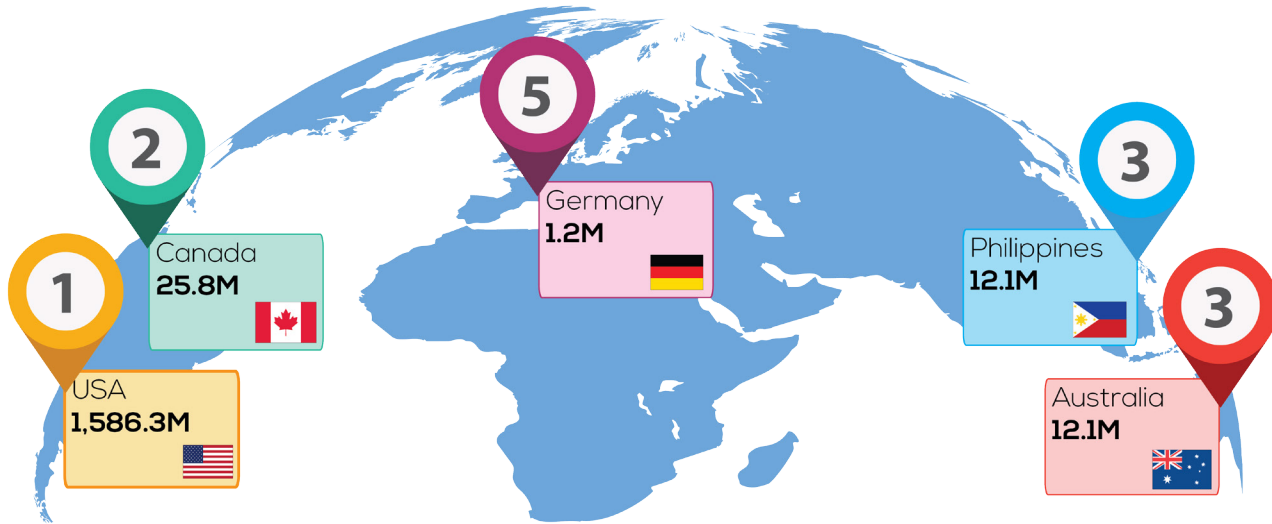
DIASPORA PHILANTHROPY THRU LINKAPIL PROGRAM (2005-2015)

Development assistance to the Philippines coursed thru the Lingkod sa Kapwa Pilipino (LINKAPIL) or Link for Philippine Development Program, a mechanism designed by CFO to cultivate and nurture partnerships between Filipino diaspora and Filipinos back in the home country. Since its inception in 1990, the program has continuously facilitated the transfer of material and financial resources from Filipinos overseas to support small scale, high-impact projects for social and economic development.

TOP 5 COUNTRIES OF ORIGIN OF DONATIONS COURSED THROUGH THE LINKAPIL PROGRAM

(2005-2015)

(TOTAL IN MILLION PESOS)



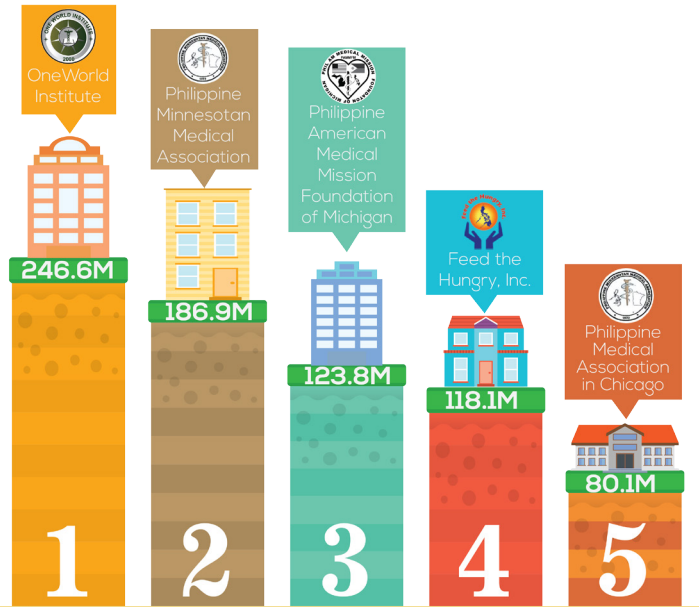
97% of overseas donations and diaspora philanthropy to the Philippines mainly come from the US. Other countries of origins include Canada, Australia and Germany.

TOP 5 DONOR ORGANIZATIONS OF THE LINKAPIL PROGRAM

(2005-2015)

(TOTAL IN MILLION PESOS)

The main benefactors of CFO's LINKAPIL Program are One World Institute, Philippine Minnesotan Medical Association, Philippine American Medical Mission Foundation of Michigan, Feed the Hungry, and Philippine Medical Association in Chicago. They are all based in the US.

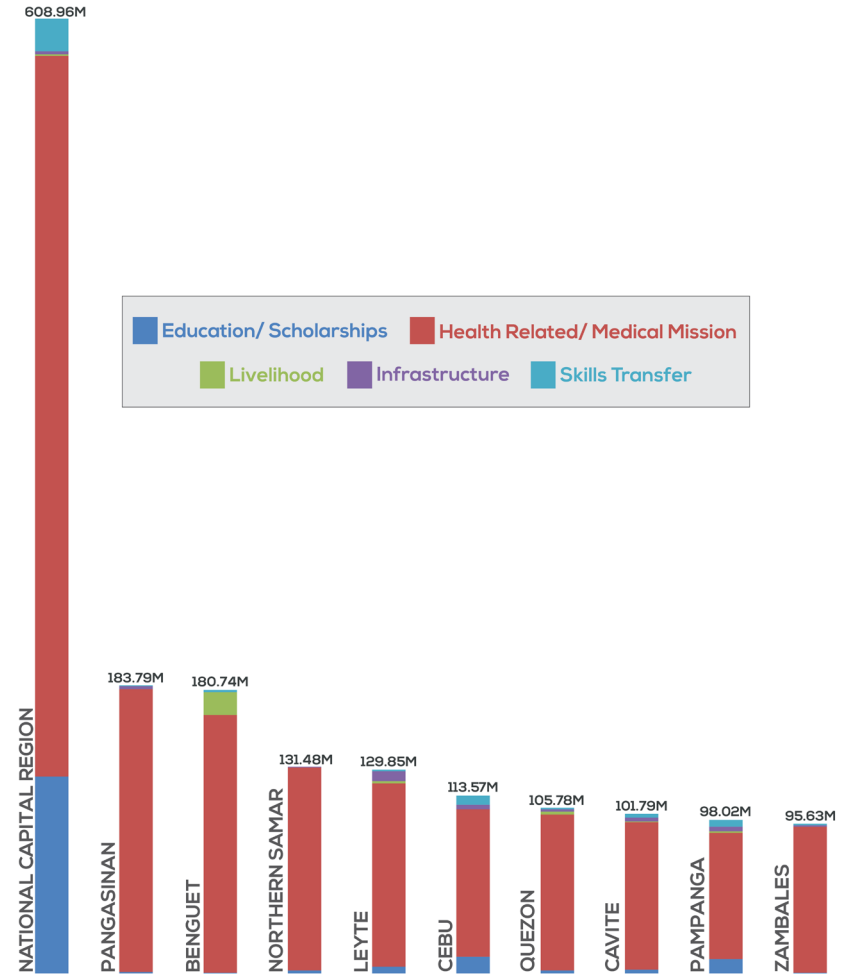


NOTE: This is based on the monetary value of donations (financial and material) made by benefactors.

TOP 10 BENEFICIARY PROVINCES OF DONATIONS

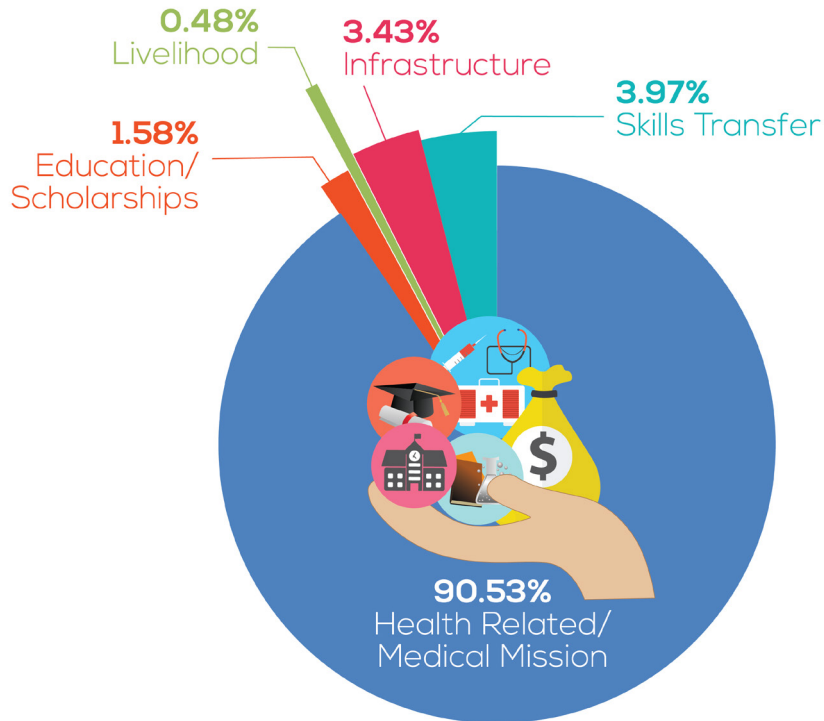
(2005-2015)
(TOTAL IN MILLION PESOS)

The main beneficiary provinces and areas of overseas donations are NCR, Pangasinan, Benguet, Northern Samar and Leyte.



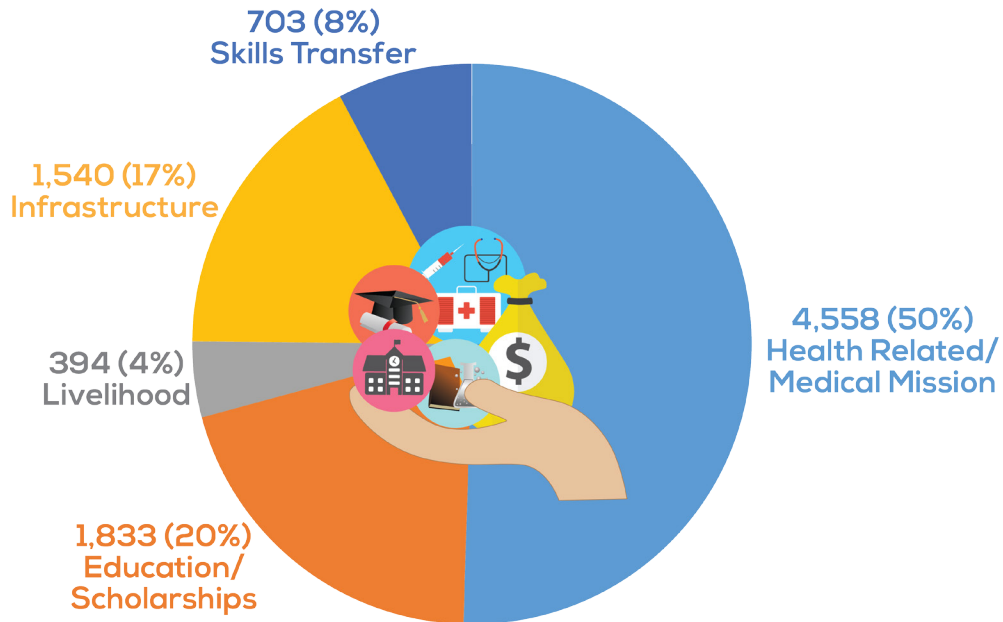
TYPE OF DONATIONS SENT THROUGH THE LINKAPIL PROGRAM

(2005-2015)



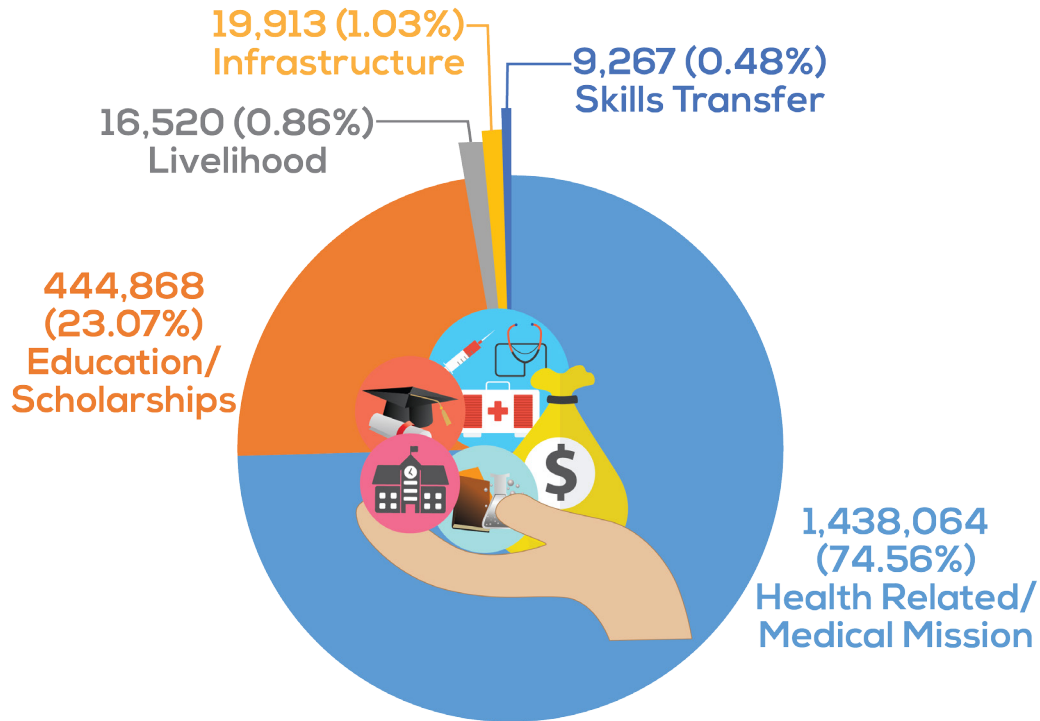
Majority (90%) of overseas donations are health-related (donation of medical supplies, equipment and medicines) or medical mission.

NUMBER OF DONORS SENDING THROUGH THE LINKAPIL PROGRAM (2005-2015)



NUMBER OF BENEFICIARIES THROUGH THE LINKAPIL PROGRAM

(2005-2015)



**SUMMARY OF DONATIONS REFERRED THRU LINKAPIL PER YEAR (IN PHP)
2005-2015**

Year	No. of Donations	Health Related/ Medical Mission	Education/ Scholarship	Livelihood	Infrastructure	Skills Transfer	TOTAL
2005	267	364,472,575.14	3,911,260.67	1,433,428.30	2,018,693.25	-	371,835,957.36
2006	257	148,663,166.82	6,206,910.54	355,665.23	3,087,338.00	-	158,313,080.59
2007	191	91,570,124.07	4,284,874.10	199,500.00	6,063,639.30	-	102,118,137.47
2008	285	126,920,768.37	3,997,384.90	163,000.00	2,149,494.65	17,449,311.55	150,679,959.47
2009	534	30,235,402.95	1,488,713.68	833,250.00	5,252,846.50	21,665,893.89	59,476,107.02
2010	495	100,517,587.46	908,782.79	818,255.00	5,738,595.31	11,105,669.34	119,088,889.90
2011	405	40,752,999.08	934,898.55	534,200.00	3,554,066.63	9,503,012.69	55,279,176.95
2012	353	74,261,345.98	1,840,523.17	0.00	7,674,124.16	2,723,049.24	86,499,042.55
2013	282	174,893,678.52	752,406.50	846,000.00	8,750,557.70	1,323,906.36	186,566,549.08
2014	197	230,518,705.11	1,167,862.87	1,637,797.00	6,547,893.44	661,476.76	240,533,735.18
2015	163	97,724,973.75	366,151.14	1,070,000.00	5,243,818.00	546,596.11	104,951,539.00
TOTAL	3,429	1,480,531,327.25	25,859,768.91	7,891,095.53	56,081,066.94	64,978,915.94	1,635,342,174.57

Source: Commission on Filipinos Overseas (CFO)

NUMBER OF DONORS SENDING THROUGH THE LINKAPIL PROGRAM 2005-2015

Year	Health Related/ Medical Mission	Education/ Scholarship	Livelihood	Infrastructure	Skills Transfer	TOTAL	%
2005	644	282	20	68	-	1,014	11.2%
2006	542	164	20	91	-	817	9.0%
2007	505	184	20	171	-	880	9.7%
2008	467	280	21	110	89	967	10.7%
2009	348	203	41	71	132	795	8.8%
2010	320	83	84	167	124	778	8.6%
2011	362	104	20	135	117	738	8.2%
2012	190	124	-	306	114	734	8.1%
2013	527	182	21	135	61	926	10.3%
2014	284	122	124	122	36	688	7.6%
2015	369	105	23	164	30	691	7.7%
TOTAL	4,558	1,833	394	1,540	703	9,028	100%
%	50.5%	20.3%	4.4%	17.1%	7.8%	100%	

Source: Commission on Filipinos Overseas (CFO)

NUMBER OF BENEFICIARIES THROUGH THE LINKAPIL PROGRAM 2005-2015

Year	Health Related/ Medical Mission	Education/ Scholarship	Livelihood	Infrastructure	Skills Transfer	TOTAL	%
2005	292,275	83,622	4,800	650	-	381,347	19.8%
2006	158,770	59,318	600	755	-	219,443	11.4%
2007	83,494	48,586	166	7,921	-	140,167	7.3%
2008	100,613	97,495	75	740	2,809	201,732	10.5%
2009	49,691	36,588	925	1,432	3,154	91,790	4.8%
2010	129,645	18,367	251	1,200	1,583	151,046	7.8%
2011	35,866	7,574	5,072	1,000	1,072	50,584	2.6%
2012	91,651	59,834	-	1,910	492	153,887	8.0%
2013	168,075	23,487	2,445	1,400	72	195,479	10.1%
2014	229,857	8,637	561	2,390	45	241,490	12.5%
2015	98,127	1,360	1,625	515	40	101,667	5.3%
TOTAL	1,438,064	444,868	16,520	19,913	9,267	1,928,632	100.0%
%	74.6%	23.1%	0.9%	1.0%	0.5%	100%	

Source: Commission on Filipinos Overseas (CFO)

TOP 10 RECIPIENT PROVINCES OF DONATIONS REFERRED THROUGH LINKAPIL (IN PHP) 2005-2015

RANK	PROVINCE	Education/ Scholarship	Health Related/ Medical Mission	Livelihood	Infrastructure	Skills Transfer	TOTAL
1	National Capital Region	125,680,881.91	459,523,005.77	906,000.00	2,218,945.35	20,634,685.53	608,963,518.56
2	Pangasinan	816,490.00	180,344,186.65	108,000.00	1,842,998.00	676,304.56	183,787,979.21
3	Benguet	379,438.50	164,719,056.27	14,168,000.00		1,473,920.33	180,740,415.10
4	Northern Samar	1,991,260.00	129,187,500.00		301,732.00		131,480,492.00
5	Leyte	4,147,909.59	117,287,298.35	1,329,912.00	5,993,237.15	1,093,527.38	129,851,884.47
6	Cebu	10,455,058.50	94,245,800.09	99,600.00	3,035,675.00	5,730,052.45	113,566,186.04
7	Quezon	2,103,616.78	99,114,911.32	1,893,428.30	1,452,283.75	1,214,933.34	105,779,173.49
8	Cavite	2,295,114.47	94,377,518.80	134,450.00	2,642,846.10	2,343,763.13	101,793,692.50
9	Pampanga	9,050,452.92	80,841,629.66	754,500.00	2,936,013.10	4,440,230.53	98,022,826.21
10	Zambalez	609,600.00	93,171,086.53	10,500.00	871,701.91	970,521.95	95,633,410.39

Source: Commission on Filipinos Overseas (CFO)

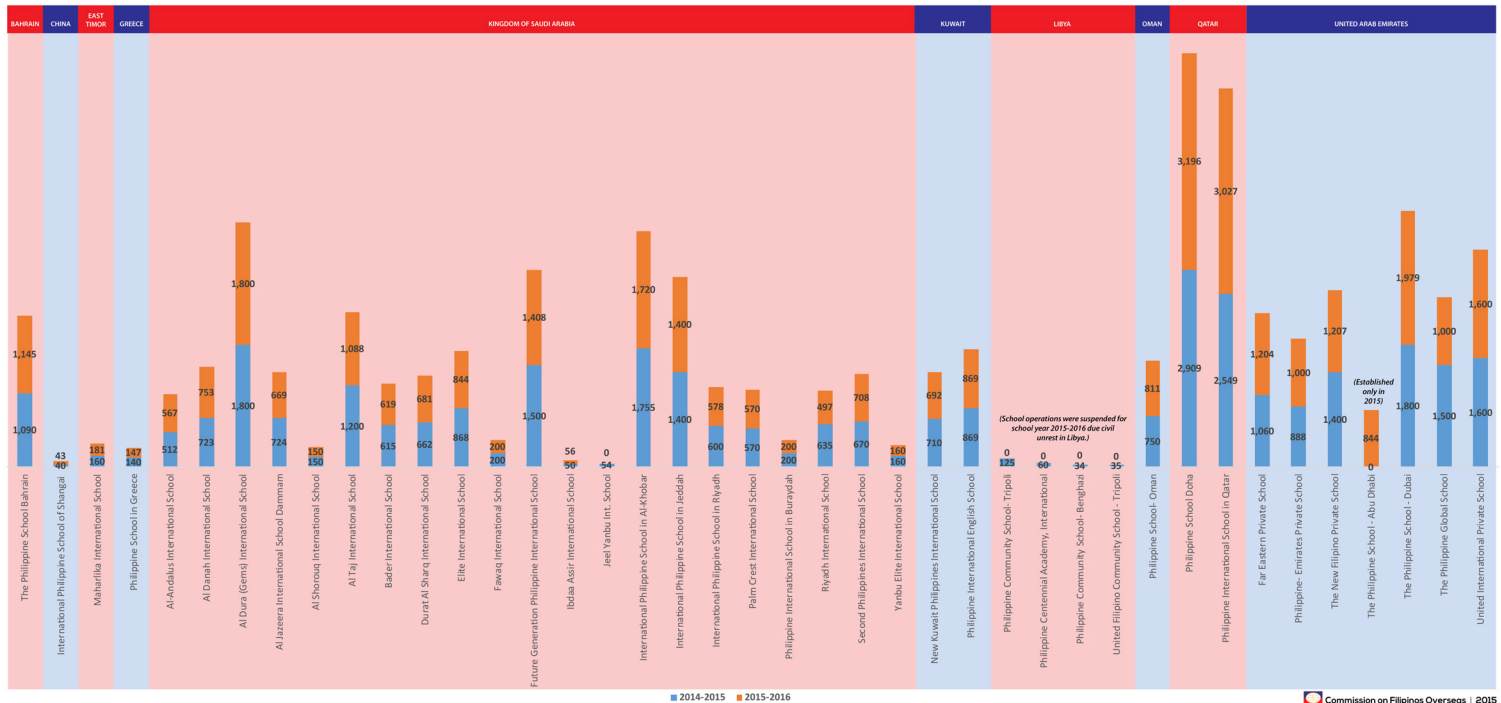
PHILIPPINE SCHOOLS OVERSEAS

(SY2014-2015; SY2015-2016)

Philippine Schools Overseas (PSOs) are private educational institutions that are fully or partially-owned and/or managed by Filipinos. These schools, which follow the prescribed Philippine curriculum, are required to secure permits to operate and be recognized both by the Philippine Department of Education and its counterpart institution in the host countries. Dependents of overseas Filipinos who studied in PSOs can easily reintegrate into the Philippine educational system upon their return to the home country.

PHILIPPINE SCHOOLS OVERSEAS ENROLEES

(SY 2014-2015 AND SY 2015-2016)



PSOs are present in Bahrain, China, East Timor, Greece, Kingdom of Saudi Arabia, Kuwait, Libya, Oman, Qatar, and the United Arab Emirates.

NUMBER OF PHILIPPINE SCHOOLS OVERSEAS PER COUNTRY

(SY 2014-2015 AND SY 2015-2016)



51% of PSOs are located in the Kingdom of Saudi Arabia.

PHILIPPINE SCHOOLS OVERSEAS BY SCHOOL CATEGORY

(as of January 2017)



38% Category IV

Institution which are fully owned by foreign nationals, but managed and operated by Filipino citizen



32% Category I

Non-stock, non-profit institutions established and controlled by Filipino community volunteers, or established as such through the assistance of Philippine Embassies or Consulates



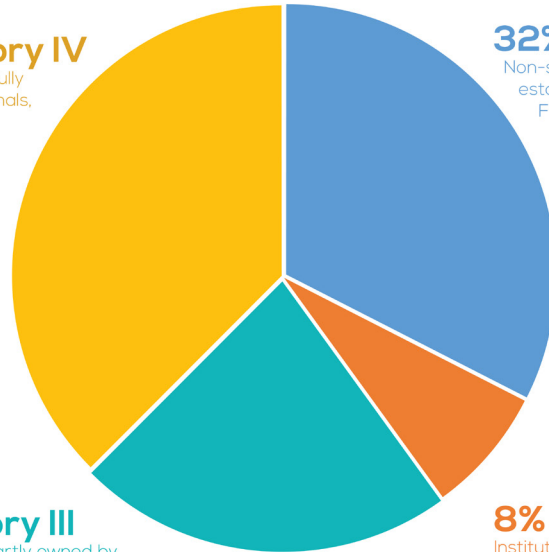
22% Category III

Institutions which are partly owned by Filipino citizens, or which are managed and operated by Filipino citizens under sponsorship of a foreign national



8% Category II

Institutions which are fully-owned and controlled by Filipino citizens as an enterprise



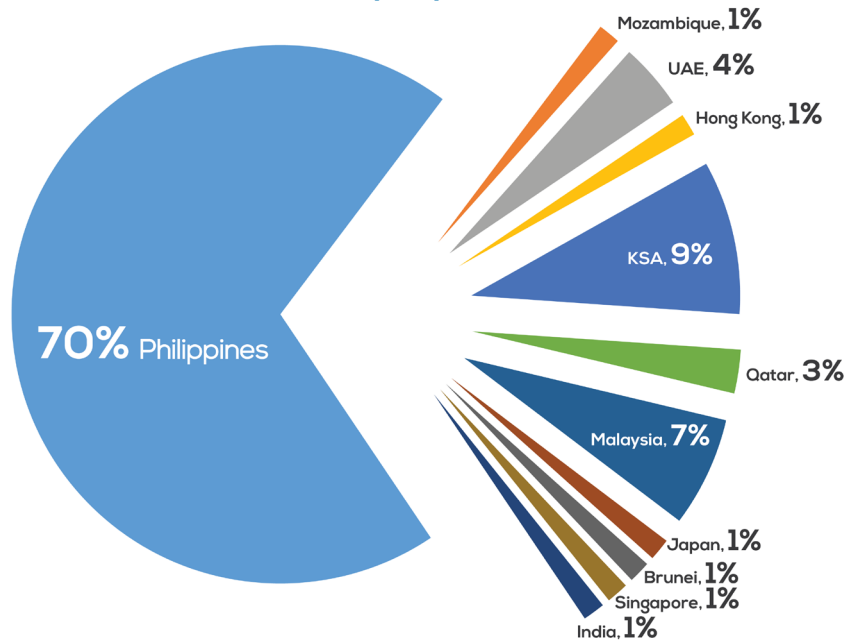
38% of PSOs are fully owned by foreign nationals; while 32% are fully owned by Filipinos.

ASSISTANCE TO NATIONALS (ATN) CASES (2015)

Assistance-to-Nationals cases received by CFO thru the 1343 Actionline, a 24/7 Hotline to respond to requests for assistance, inquiries and referrals involving suspected human trafficking activities.

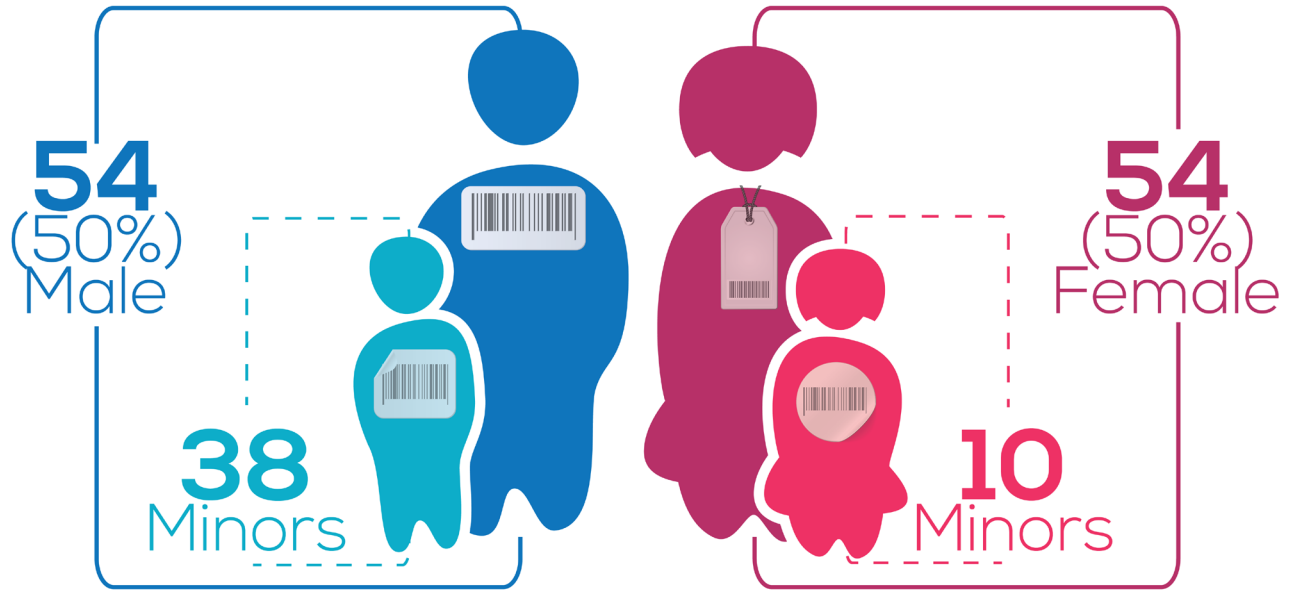
NUMBER OF CASES BY COUNTRY

(2015)



70% of the human trafficking cases received thru 1343 Actionline came from the Philippines. Overseas cases mostly came from Malaysia and Saudi Arabia.

NUMBER OF HUMAN TRAFFICKING VICTIMS BY SEX (2015)



An equal number of male and female victims were assisted through reports made to the 1343 Hotline. 44% of the victims are minors.

NUMBER OF CASES (2015)

82 Total



35% are human trafficking cases, while 15% are illegal recruitment cases.

CFO Editorial Team

Maria Regina Angela G. Galias
Rodrigo V. Garcia, Jr.
Frencel Louie T. Tingga
Andrea Luisa C. Anolin

CFO Statistical Research Team

Marita L. Del Rosario-Apattad
Ivy D. Miravalles
Evelyn C. Duriman
Erwin Paul S. Cristobal
Benilda R. Pereyra
Janet B. Ramos
Mia A. Bisa
Rosemarie V. Juan
Engr. Romeo M. Rosas II

Cover Design, Infographics and Layout

Ernela V. Abelgas

Data Sources

CFO Statistics on Filipino Registered Emigrants, Au Pairs, Exchange Visitor Program, LINKAPIL, and 1343 Actionline



Lingkod sa Kapwa Pilipino Program
(Link for Philippine Development Program)

Give back and help your kababayan. Partake in causes that will benefit Filipinos in need. The LINKAPIL facilitates the flow of assistance from overseas Filipinos to specific beneficiaries in the Philippines.

Education
Invest in a child's future

Community buildings
Fuel growth through infrastructure building

Livelihood
Provide livelihood opportunities

Health & Welfare
Contribute to making a healthy community



Visit our website
www.cfo-linkapil.org.ph



Like us on facebook
www.facebook.com/linkapil

1343 ACTIONLINE AGAINST HUMAN TRAFFICKING

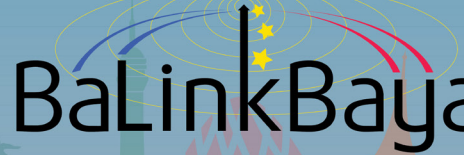

REPORT NOW!
CALL OR TEXT 1343



Call **(02) 1343** if outside Metro Manila
Or report through our website
www.1343actionline.ph

Download the
1343 Actionline Mobile App





BaLinkBayan

“Ako’y BaLinkBayan”



www.balinkbayan.gov.ph

 /balinkbayan



Office of the President of the Philippines
COMMISSION ON FILIPINOS OVERSEAS

Citigold Center, 1345 Quirino Avenue cor. Osmeña Highway (South Superhighway), Manila, Philippines 1007

Tel. No.: (632) 552-4700 | Fax No.: (632) 561-8332 | Email: info@cfo.gov.ph

Website: www.cfo.gov.ph | [FB/commissiononfilipinosoverseas](https://www.facebook.com/commissiononfilipinosoverseas) | [Twitter/CFO_tweet](https://twitter.com/CFO_tweet)